

CAMP NOTRE-DAME 2024

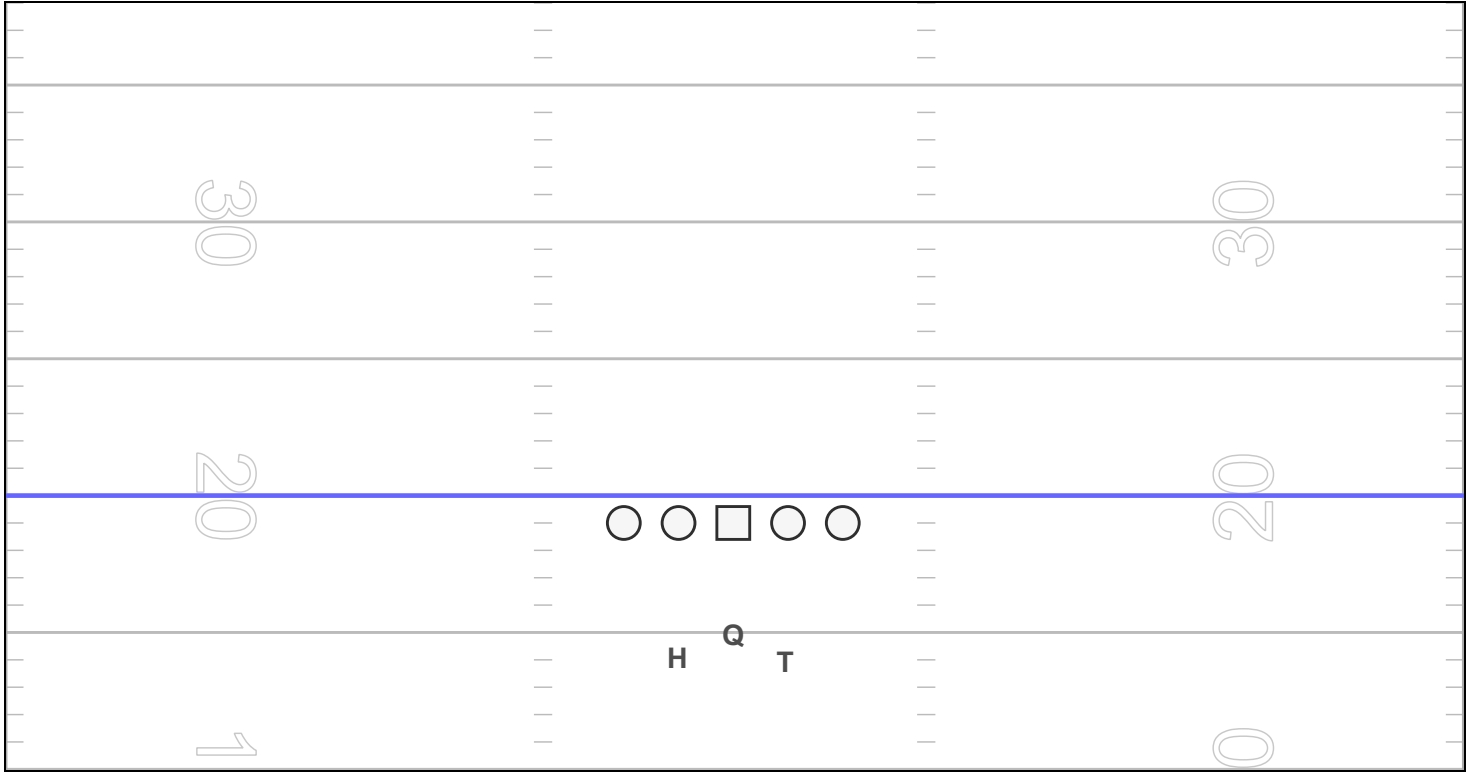
Campus Notre-Dame de Foy

Mens Varsity Football

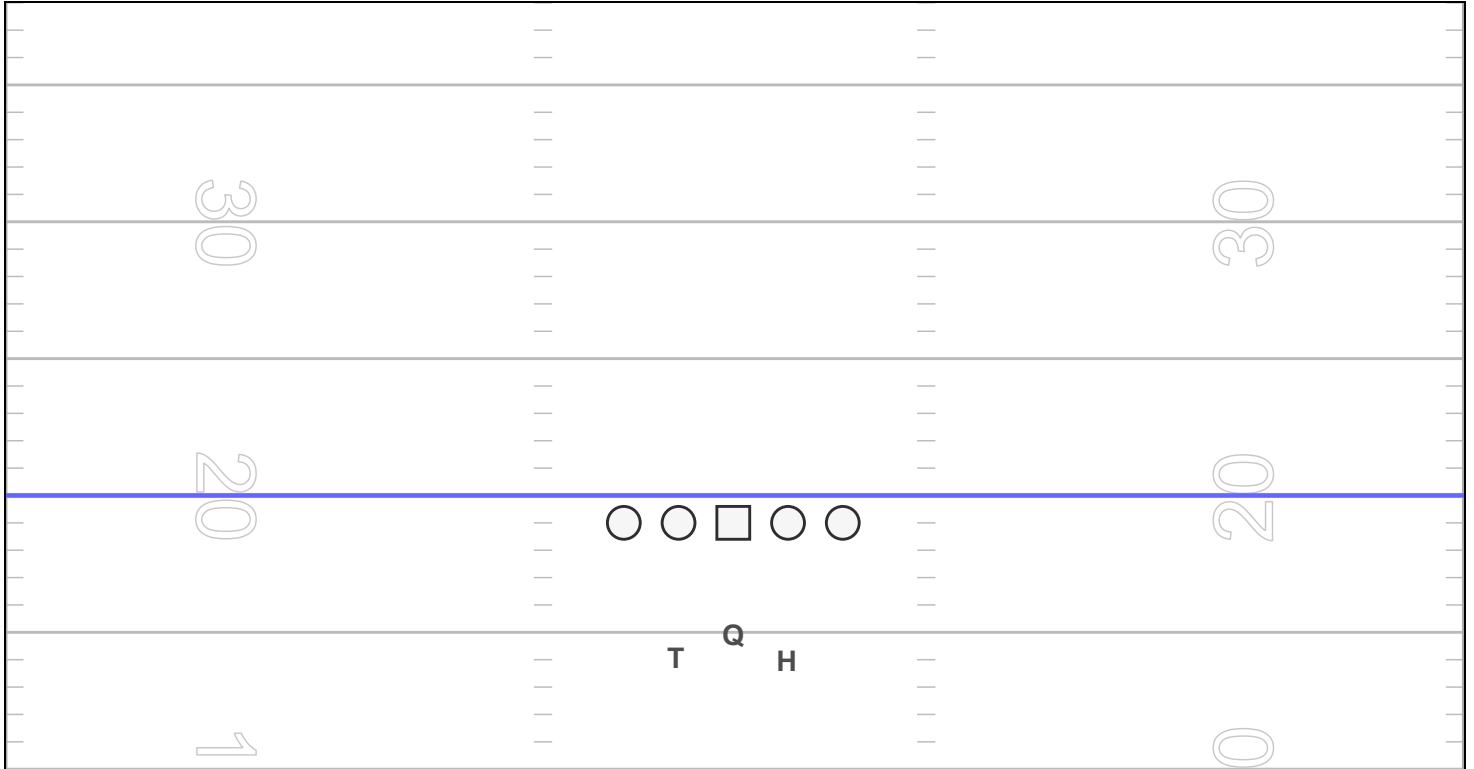
Offense



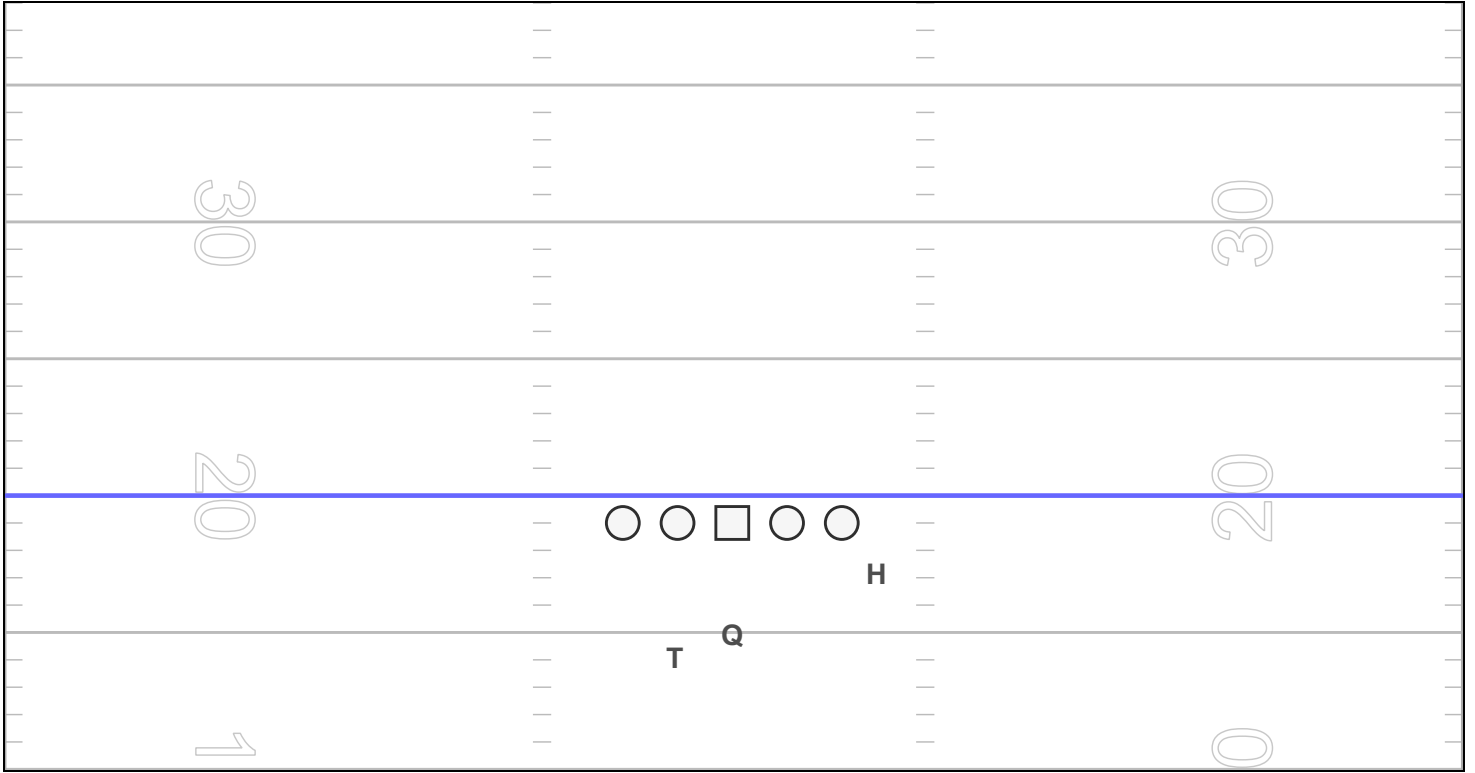
BASE RIGHT



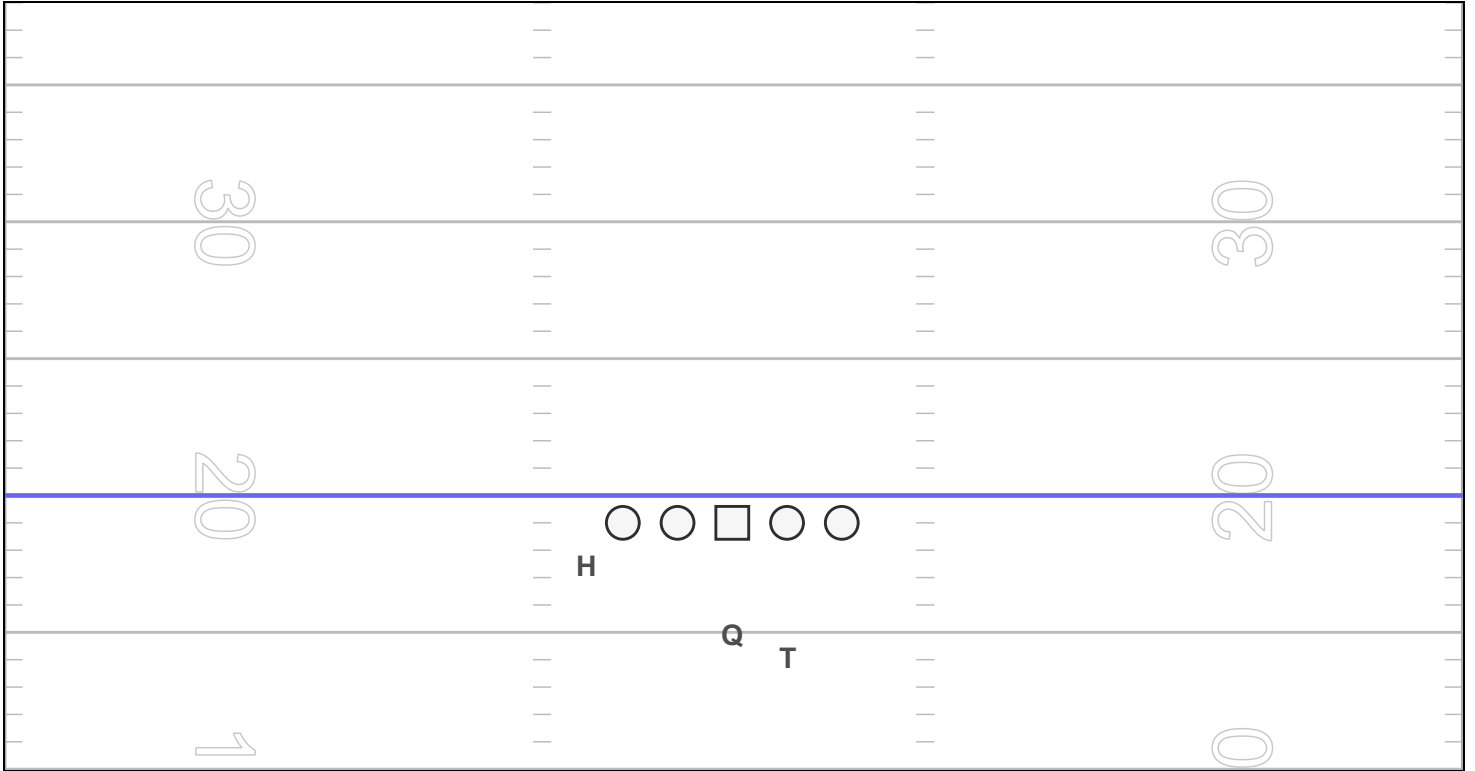
BASE LEFT



WING



WING LEFT



HOT RIGHT

A handwriting practice grid with four horizontal lines. A blue line is drawn on the second line from the top. The grid contains the following elements:

- Vertical numbers 30, 20, and 1 on both the left and right sides.
- A central row of five shapes: a circle, a circle, a square, a circle, and a circle.
- Characters 'z' and 'w' on the blue line.
- Characters 'Y', 'Aa', 'Q', and 'X' on the third line from the top.
- A large number '0' at the bottom right.

HOT LEFT

A handwriting practice grid with four horizontal lines. A blue line is drawn on the second line from the top. The grid contains the following elements:

- Vertical numbers 30, 20, and 1 on both the left and right sides.
- A central row of five shapes: a circle, a circle, a square, a circle, and a circle.
- Characters 'w' and 'z' on the blue line.
- Characters 'X', 'Q', 'Aa', and 'Y' on the third line from the top.
- A large number '0' at the bottom right.

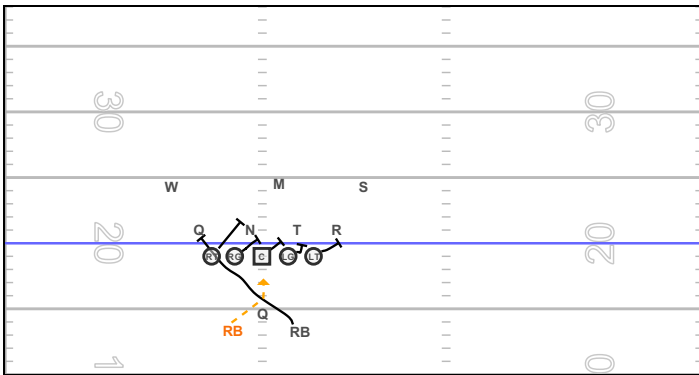
SUPER HOT RIGHT

A handwriting practice grid with four horizontal lines. The top line is dashed, the second is solid, the third is dashed, and the bottom is solid. On the left side, the numbers 30, 20, and 10 are written vertically. On the right side, the numbers 30, 20, and 0 are written vertically. A blue horizontal line is drawn at the 20 level. In the center, there are five shapes: a circle, a circle, a square, a circle, and a circle. Below the blue line, the letters Q, X, Aa, and Y are placed. The letter W is placed to the right of the 20 level on the right side. The number 1 is at the bottom left and 0 is at the bottom right.

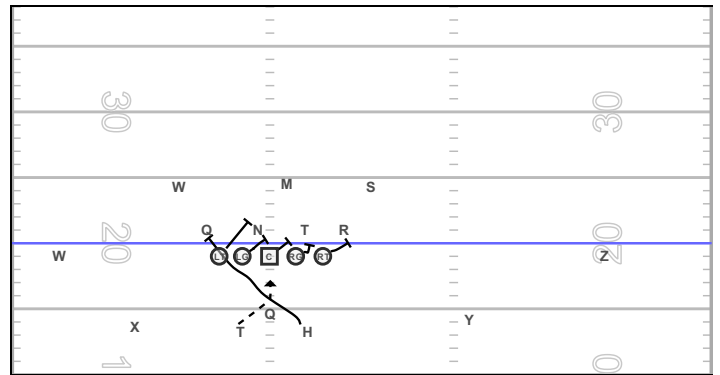
SUPER HOT LEFT

A handwriting practice grid with four horizontal lines. The top line is dashed, the second is solid, the third is dashed, and the bottom is solid. On the left side, the numbers 30, 20, and 10 are written vertically. On the right side, the numbers 30, 20, and 0 are written vertically. A blue horizontal line is drawn at the 20 level. In the center, there are five shapes: a circle, a circle, a square, a circle, and a circle. Below the blue line, the letters W, Y, Aa, X, and Q are placed. The letter Z is placed to the right of the 20 level on the right side. The number 1 is at the bottom left and 0 is at the bottom right.

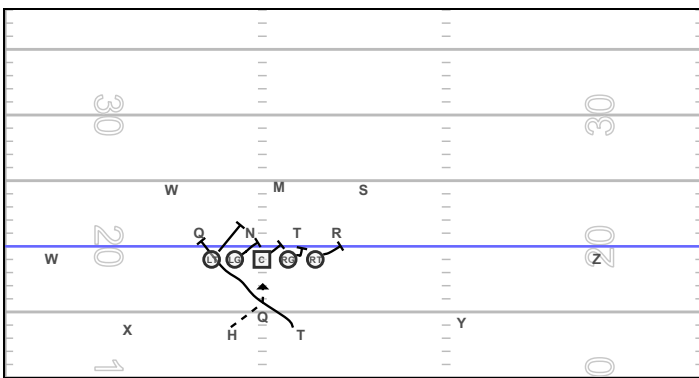
DOG BLAST



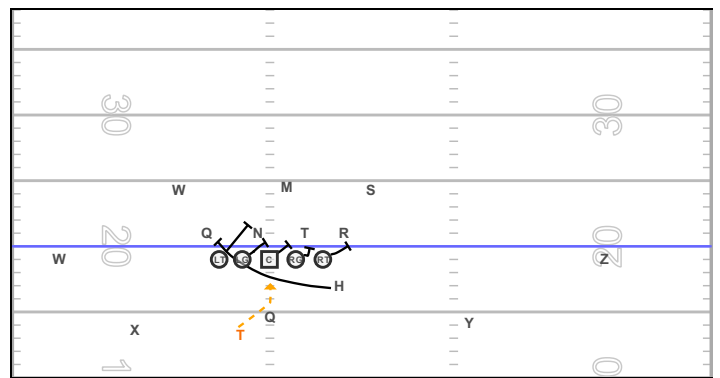
HOT LEFT - BASE LEFT DOG BLAST



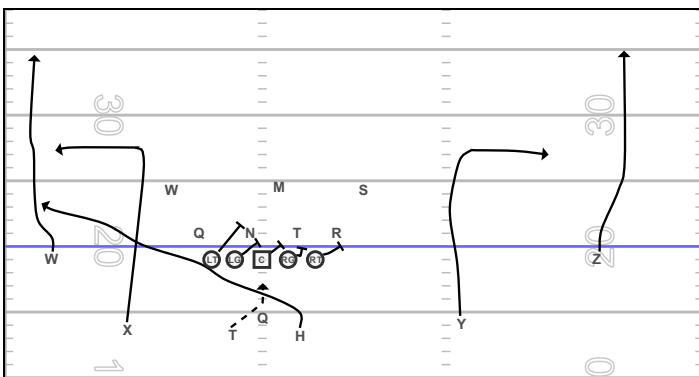
HOT LEFT - BASE RIGHT DOG BLAST



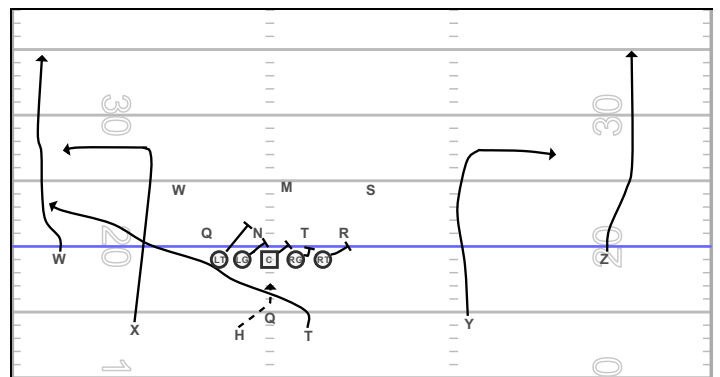
HOT LEFT - WING RIGHT DOG BLAST



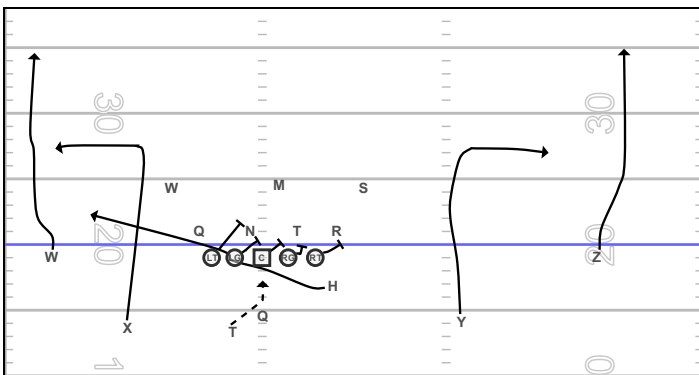
HOT LEFT - BASE LEFT DOG SLICE - FLORIDE



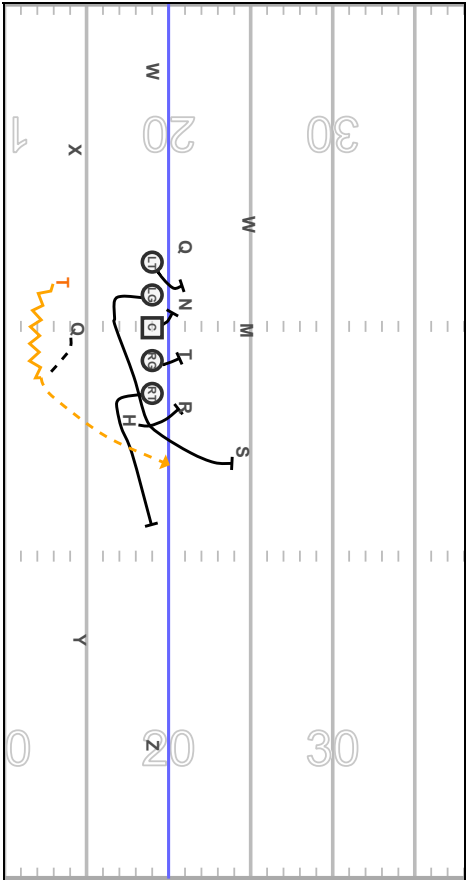
HOT LEFT - BASE RIGHT DOG SLICE - FLORIDE



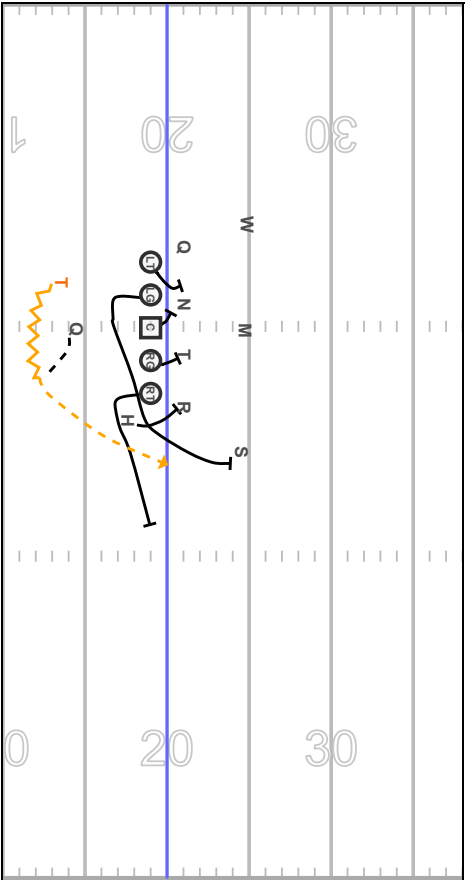
HOT LEFT - WING RIGHT DOG SLICE - FLORIDE



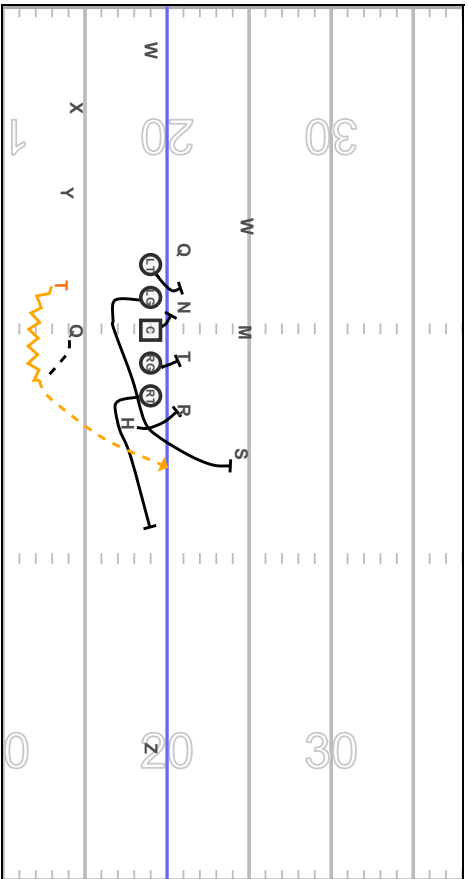
HOT LEFT - WING RIGHT PUMA



PUMA



SUPER HOT LEFT - WING RIGHT PUMA



HOT LEFT - BASE LEFT LÉOPARD

A handwriting practice sheet with four horizontal lines. The top line is blue. The middle line is dashed. The bottom line is blue. The bottom-most line is black. The word 'LÉOPARD' is written in a large, outlined font across the middle. The letters are numbered 1 through 17. Stroke order is indicated by arrows: 1 (blue arrow) for the top bar, 2 (black arrow) for the vertical stem, 3 (black arrow) for the top curve, 4 (black arrow) for the middle curve, 5 (black arrow) for the bottom curve, 6 (black arrow) for the right curve, 7 (black arrow) for the right vertical stem, 8 (black arrow) for the right top curve, 9 (black arrow) for the right middle curve, 10 (black arrow) for the right bottom curve, 11 (black arrow) for the right top curve, 12 (black arrow) for the right middle curve, 13 (black arrow) for the right bottom curve, 14 (black arrow) for the right top curve, 15 (black arrow) for the right middle curve, 16 (black arrow) for the right bottom curve, and 17 (black arrow) for the right top curve. A dashed orange arrow points from the top curve to the middle curve. The letters 'w', 'x', 'y', and 'z' are written in a smaller, outlined font below the main word. The numbers '20' and '30' are written in a smaller, outlined font on the left and right sides of the sheet.

SUPER HOT LEFT - WING RIGHT LÉOPARD

A handwriting practice sheet with four horizontal lines. The top line is blue. The middle line is dashed. The bottom line is blue. The bottom-most line is black. The word 'LÉOPARD' is written in a large, outlined font across the middle. The letters are numbered 1 through 17. Stroke order is indicated by arrows: 1 (blue arrow) for the top bar, 2 (black arrow) for the vertical stem, 3 (black arrow) for the top curve, 4 (black arrow) for the middle curve, 5 (black arrow) for the bottom curve, 6 (black arrow) for the right curve, 7 (black arrow) for the right vertical stem, 8 (black arrow) for the right top curve, 9 (black arrow) for the right middle curve, 10 (black arrow) for the right bottom curve, 11 (black arrow) for the right top curve, 12 (black arrow) for the right middle curve, 13 (black arrow) for the right bottom curve, 14 (black arrow) for the right top curve, 15 (black arrow) for the right middle curve, 16 (black arrow) for the right bottom curve, and 17 (black arrow) for the right top curve. A dashed orange arrow points from the top curve to the middle curve. The letters 'w', 'x', 'y', and 'z' are written in a smaller, outlined font below the main word. The numbers '20' and '30' are written in a smaller, outlined font on the left and right sides of the sheet.

LÉOPARD

A handwriting practice sheet with four horizontal lines. The top line is blue. The middle line is dashed. The bottom line is blue. The bottom-most line is black. The word 'LÉOPARD' is written in a large, outlined font across the middle. The letters are numbered 1 through 17. Stroke order is indicated by arrows: 1 (blue arrow) for the top bar, 2 (black arrow) for the vertical stem, 3 (black arrow) for the top curve, 4 (black arrow) for the middle curve, 5 (black arrow) for the bottom curve, 6 (black arrow) for the right curve, 7 (black arrow) for the right vertical stem, 8 (black arrow) for the right top curve, 9 (black arrow) for the right middle curve, 10 (black arrow) for the right bottom curve, 11 (black arrow) for the right top curve, 12 (black arrow) for the right middle curve, 13 (black arrow) for the right bottom curve, 14 (black arrow) for the right top curve, 15 (black arrow) for the right middle curve, 16 (black arrow) for the right bottom curve, and 17 (black arrow) for the right top curve. A dashed orange arrow points from the top curve to the middle curve. The letters 'w', 'x', 'y', and 'z' are written in a smaller, outlined font below the main word. The numbers '20' and '30' are written in a smaller, outlined font on the left and right sides of the sheet.

HOT LEFT - BASE RIGHT LÉOPARD

A handwriting practice sheet with four horizontal lines. The top line is blue. The middle line is dashed. The bottom line is blue. The bottom-most line is black. The word 'LÉOPARD' is written in a large, outlined font across the middle. The letters are numbered 1 through 17. Stroke order is indicated by arrows: 1 (blue arrow) for the top bar, 2 (black arrow) for the vertical stem, 3 (black arrow) for the top curve, 4 (black arrow) for the middle curve, 5 (black arrow) for the bottom curve, 6 (black arrow) for the right curve, 7 (black arrow) for the right vertical stem, 8 (black arrow) for the right top curve, 9 (black arrow) for the right middle curve, 10 (black arrow) for the right bottom curve, 11 (black arrow) for the right top curve, 12 (black arrow) for the right middle curve, 13 (black arrow) for the right bottom curve, 14 (black arrow) for the right top curve, 15 (black arrow) for the right middle curve, 16 (black arrow) for the right bottom curve, and 17 (black arrow) for the right top curve. A dashed orange arrow points from the top curve to the middle curve. The letters 'w', 'x', 'y', and 'z' are written in a smaller, outlined font below the main word. The numbers '20' and '30' are written in a smaller, outlined font on the left and right sides of the sheet.

HALF FIELD PASS 1

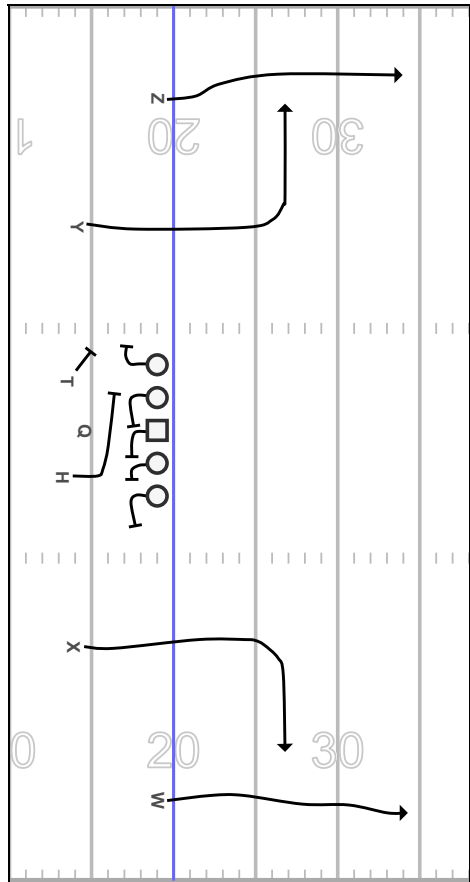
HOT LEFT - BASE LEFT HOUSTON - 70

HOUSTON

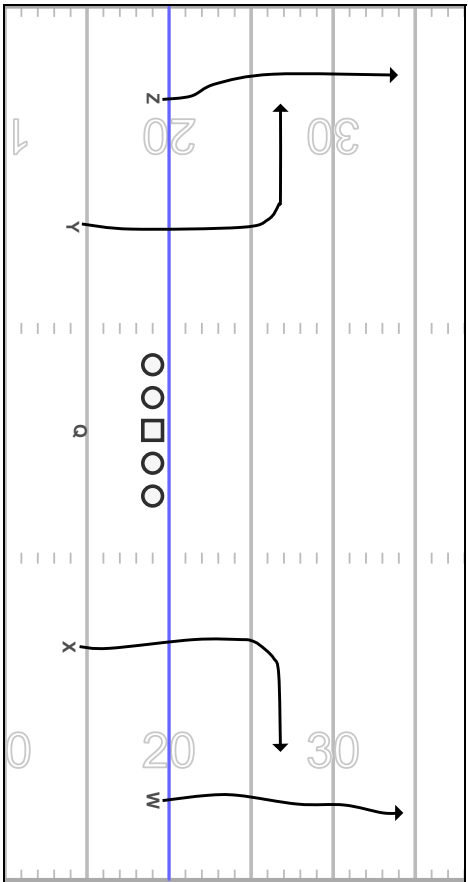
HOT LEFT - WING RIGHT HOUSTON - 70

MULTIPLE PLAYS

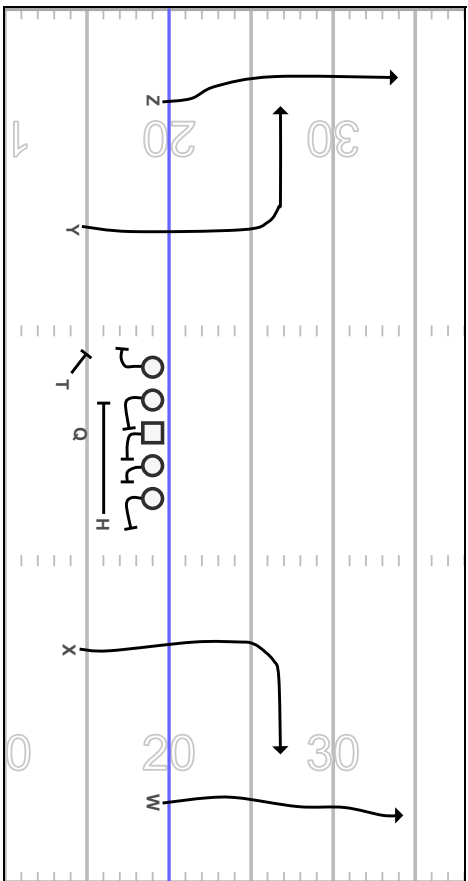
HOT LEFT - BASE LEFT FLORIDE 70



HALF FIELD PASS 2 FLORIDE

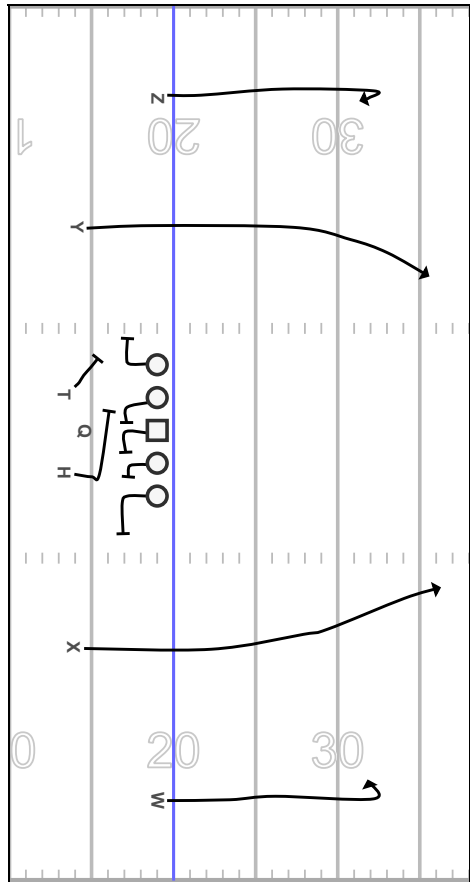


HOT LEFT - WING RIGHT FLORIDE 70

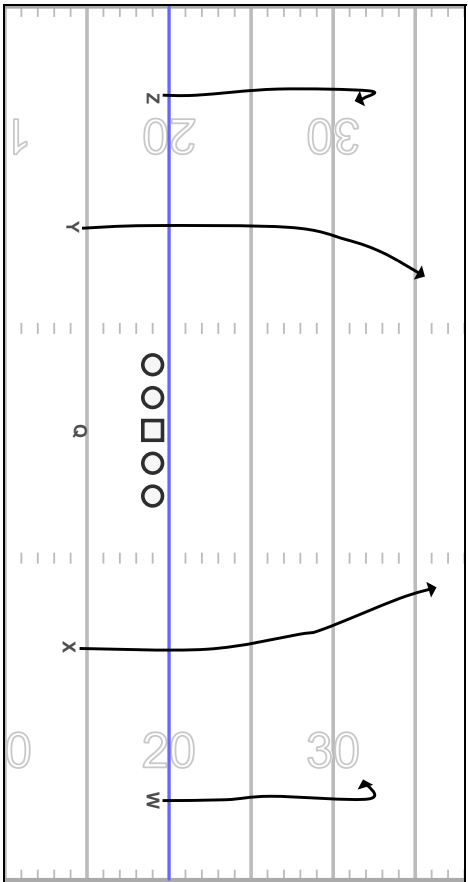


MULTIPLE PLAYS

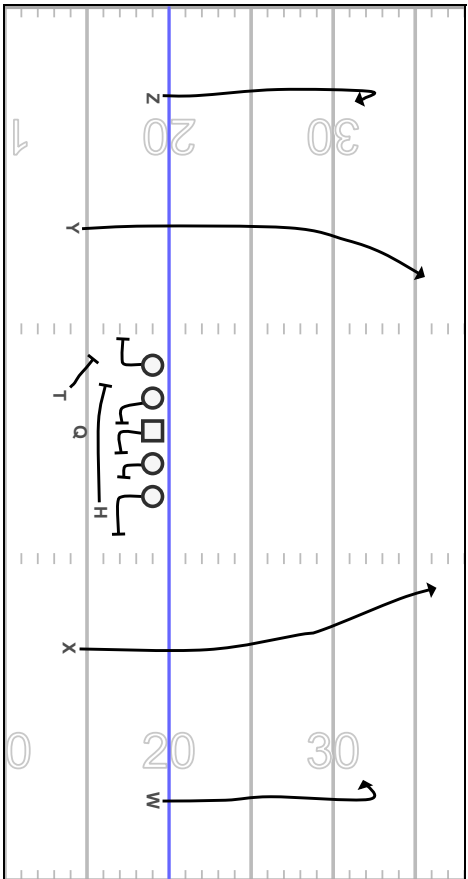
HOT LEFT - BASE LEFT BOSTON 70



HALF FIELD PASS 3 BOSTON

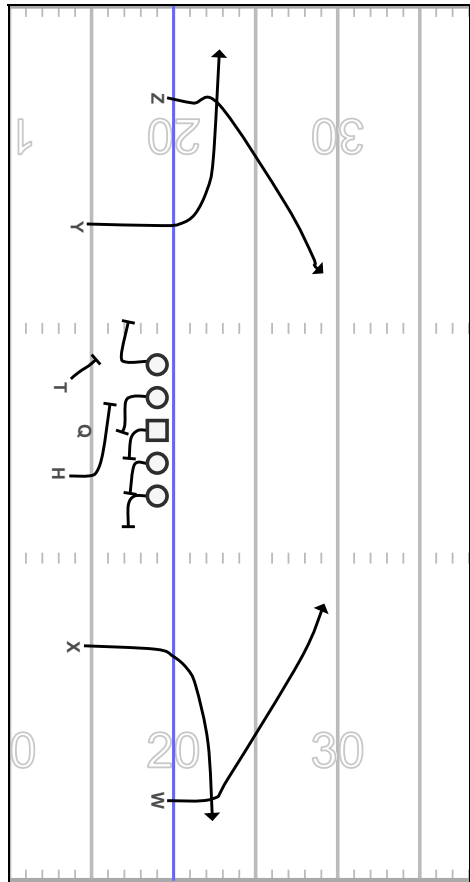


HOT LEFT - WING RIGHT BOSTON 70

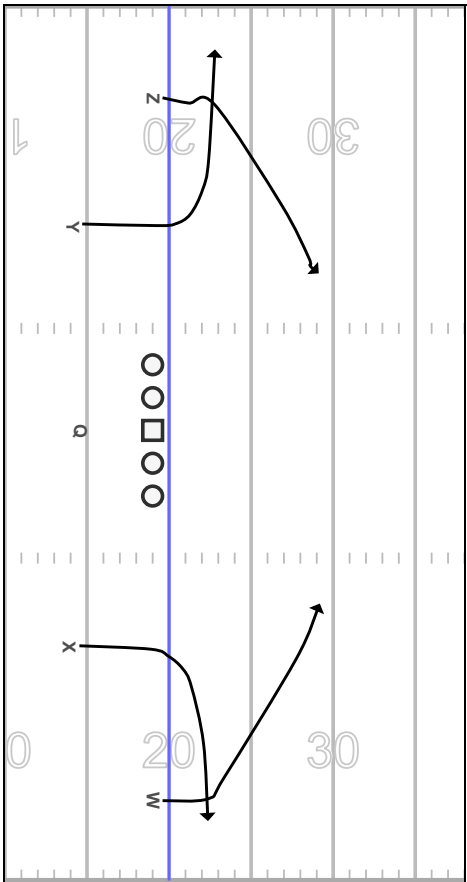


MULTIPLE PLAYS

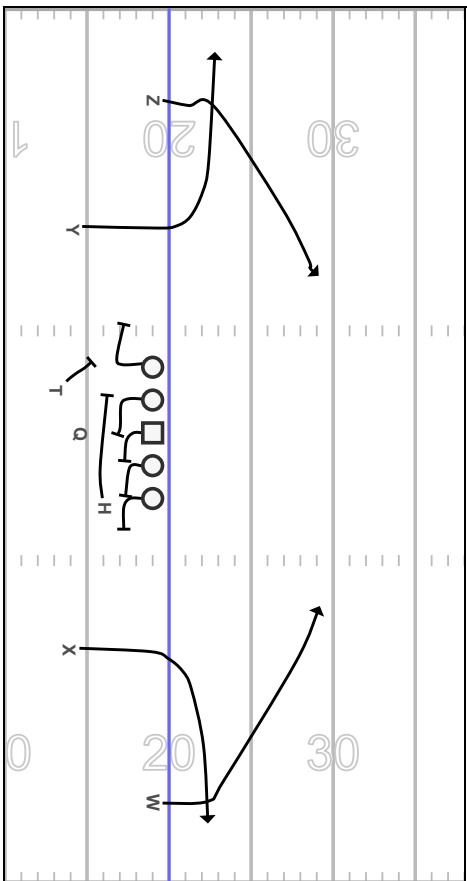
HOT LEFT - BASE LEFT SEATTLE 70



HALF FIELD PASS 4 SEATTLE

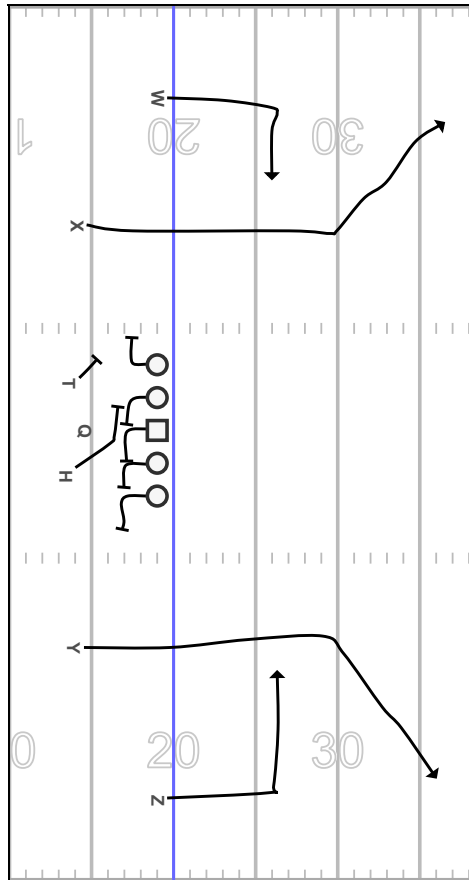


HOT LEFT - WING RIGHT SEATTLE 70

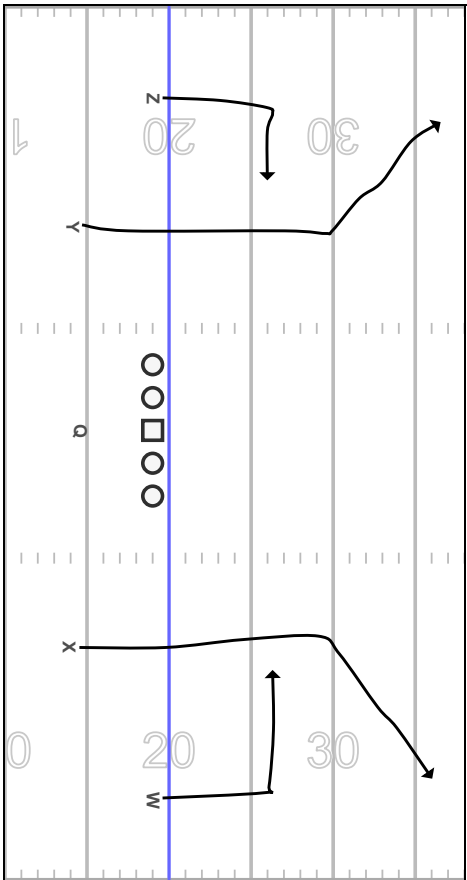


MULTIPLE PLAYS

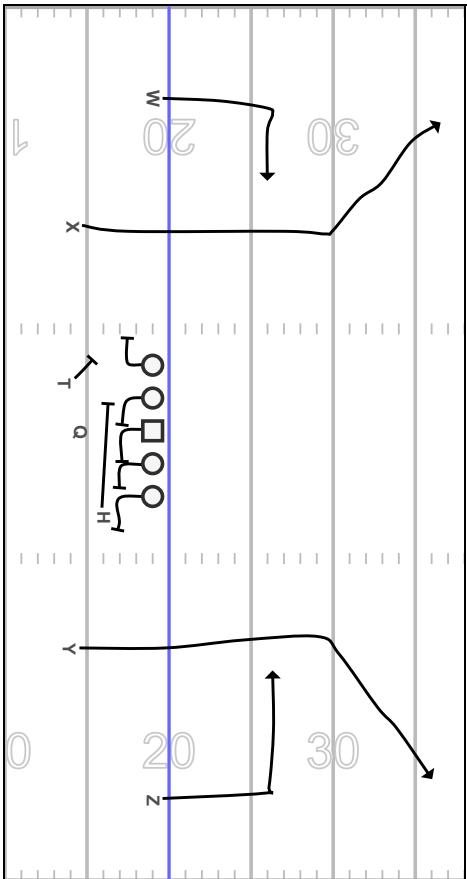
HOT LEFT - BASE LEFT COLORADO 70



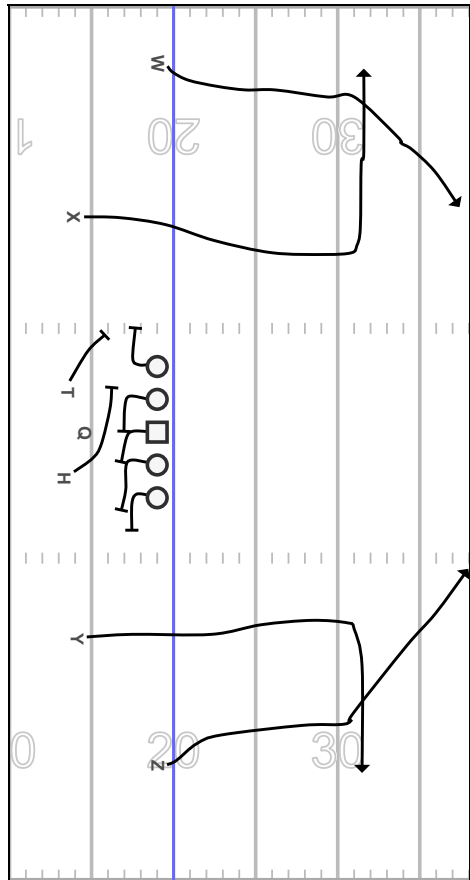
HALF FIELD PASS 5 COLORADO



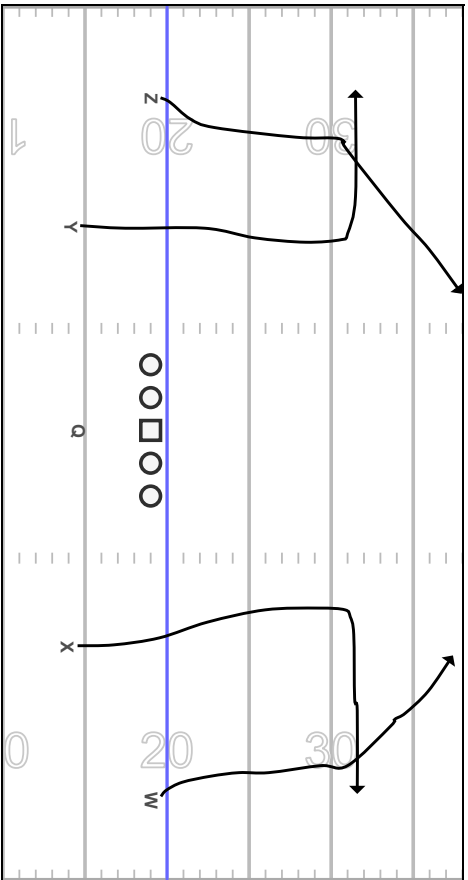
HOT LEFT - WING RIGHT COLORADO 70



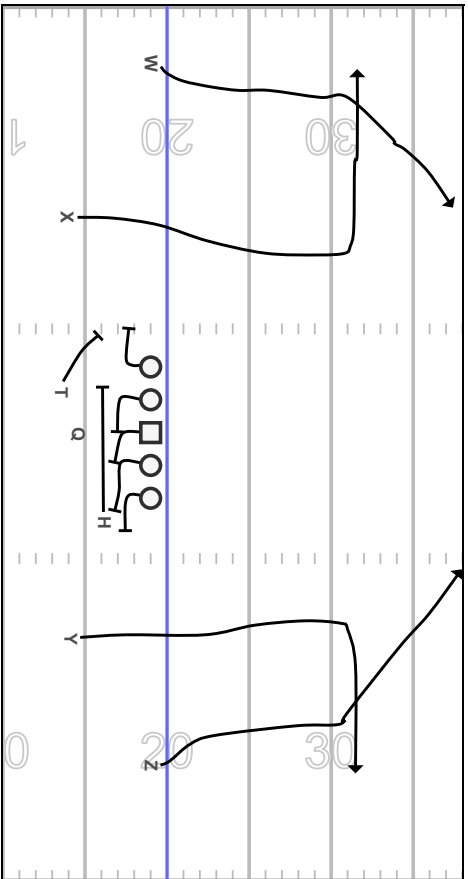
HOT LEFT - BASE LEFT PITTSBURGH 70



HALF FIELD PASS 6 PITTSBURGH

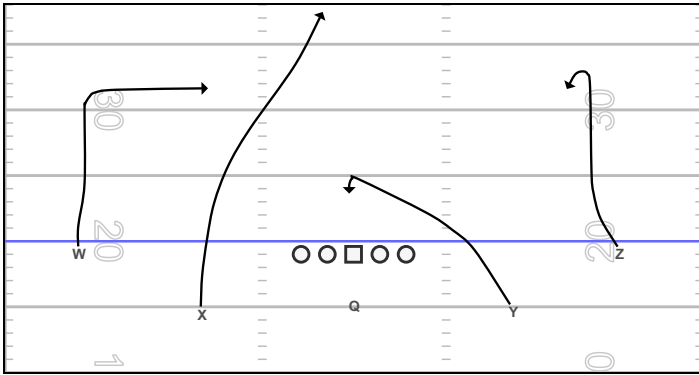


HOT LEFT - WING RIGHT PITTSBURGH 70

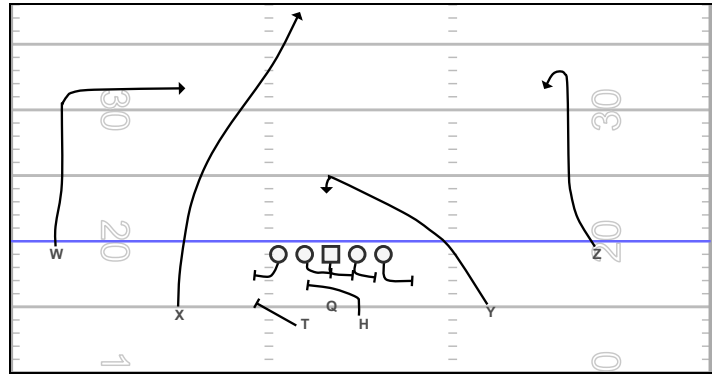


MULTIPLE PLAYS

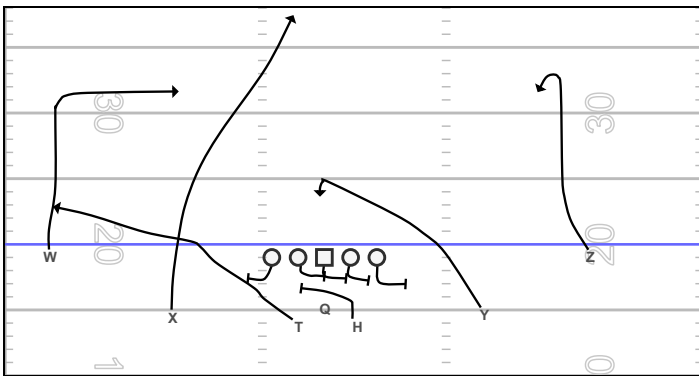
FULL FIELD 1 MONTRÉAL



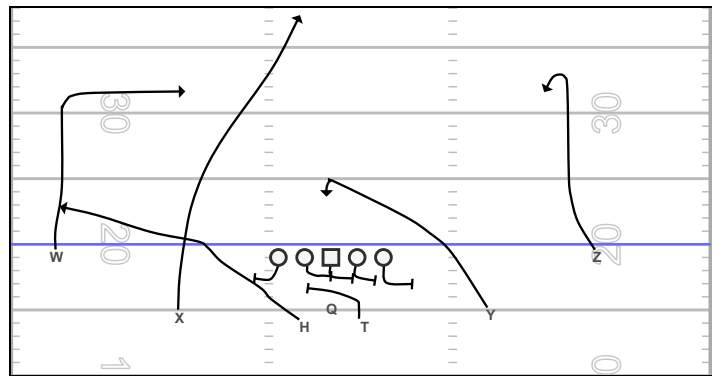
HOT LEFT - BASE LEFT MONTRÉAL 70



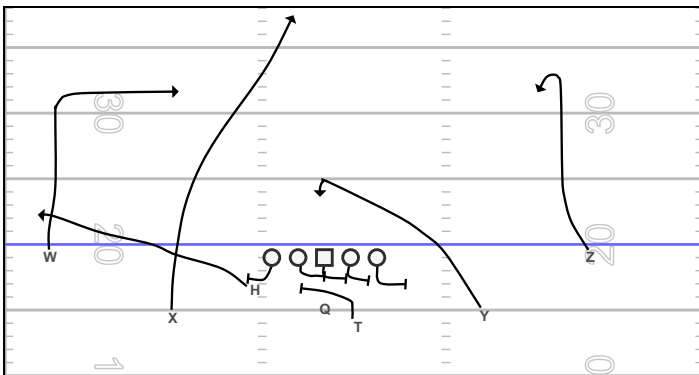
HOT LEFT - BASE LEFT MONTRÉAL - FLAT 60



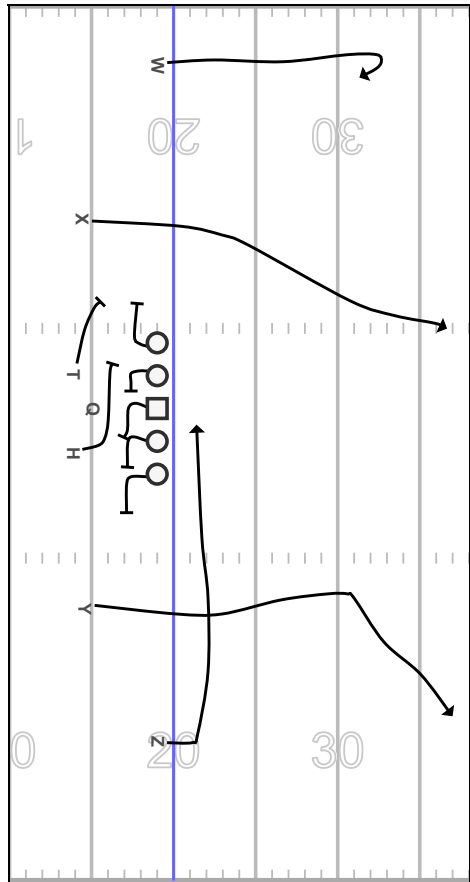
HOT LEFT - BASE RIGHT MONTRÉAL - FLAT 60



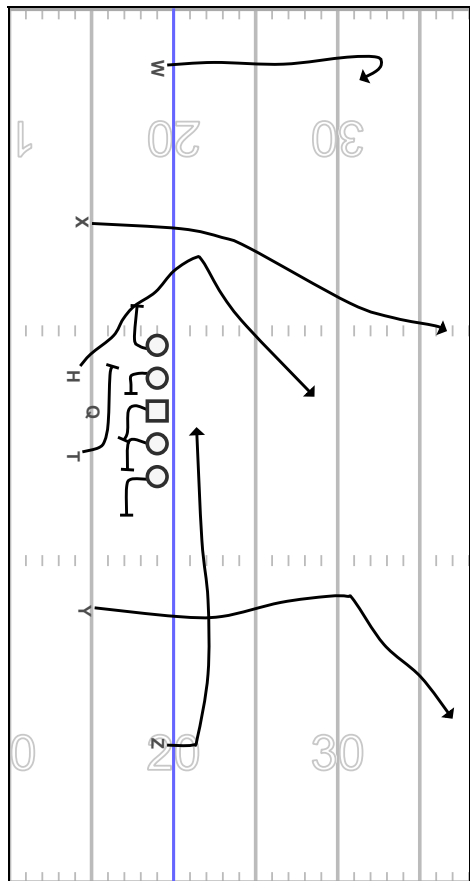
HOT LEFT - WING LEFT MONTRÉAL - FLAT 60



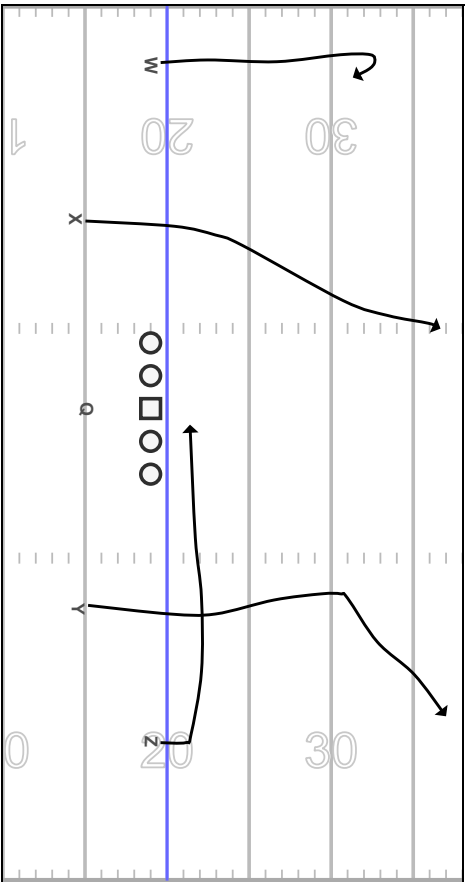
HOT LEFT - BASE LEFT TORONTO 70



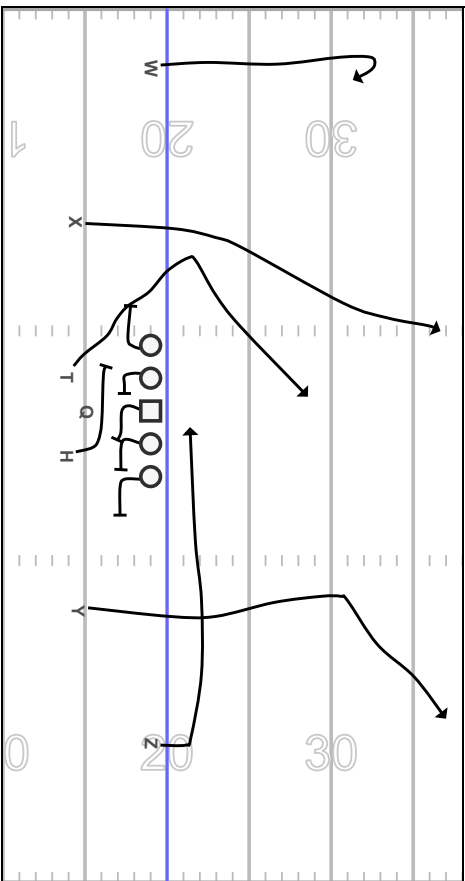
HOT LEFT - BASE RIGHT TORONTO ANGLE 60



FULL FIELD 2 TORONTO

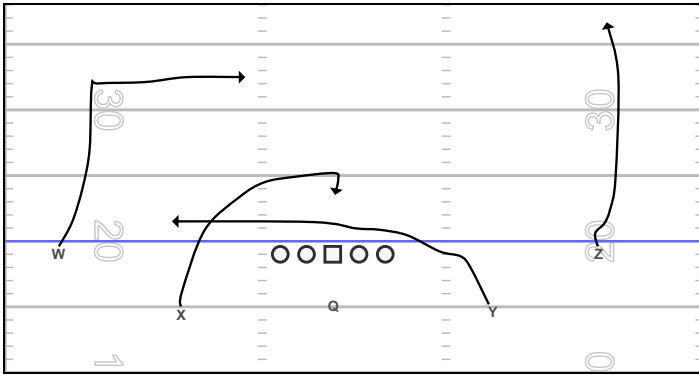


HOT LEFT - BASE LEFT TORONTO ANGLE 60

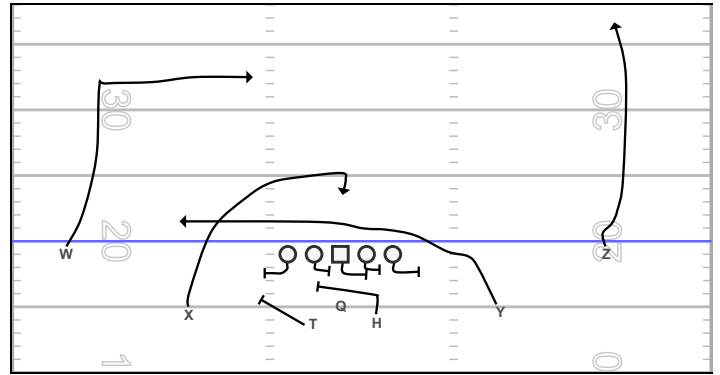


MULTIPLE PLAYS

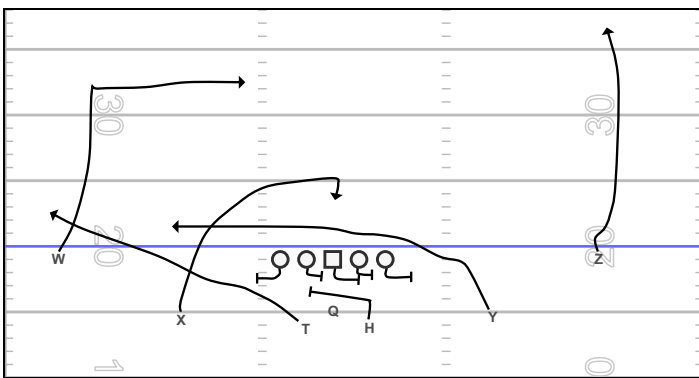
FULL FIELD 3 HAMILTON



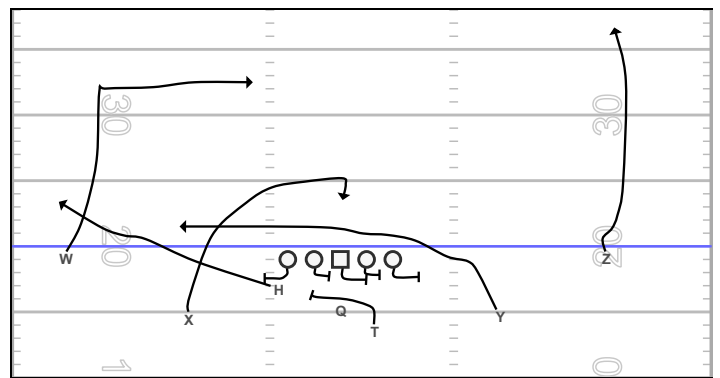
HOT LEFT - BASE LEFT HAMILTON 70



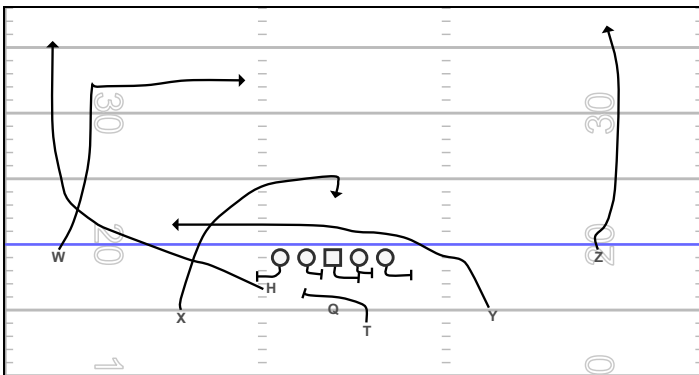
HOT LEFT - BASE LEFT HAMILTON FLAT 60



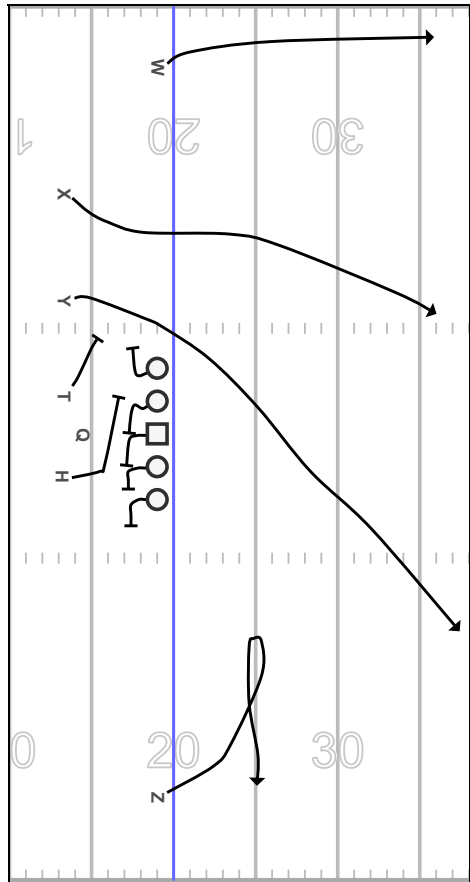
HOT LEFT - WING LEFT HAMILTON FLAT 60



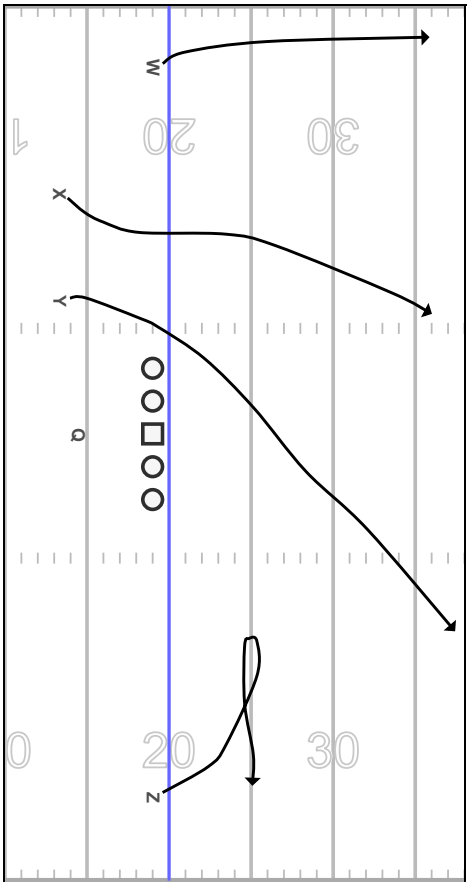
HOT LEFT - WING LEFT HAMILTON FLAT UP 60



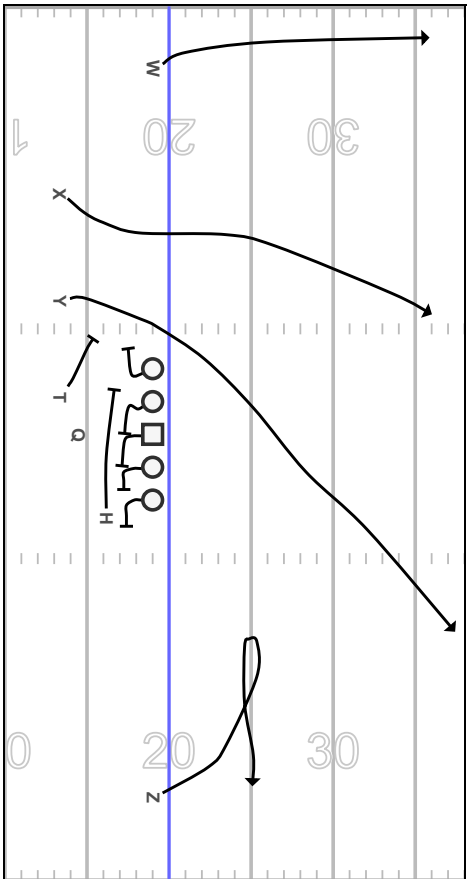
SUPER HOT LEFT - BASE LEFT VANCOUVERT 70

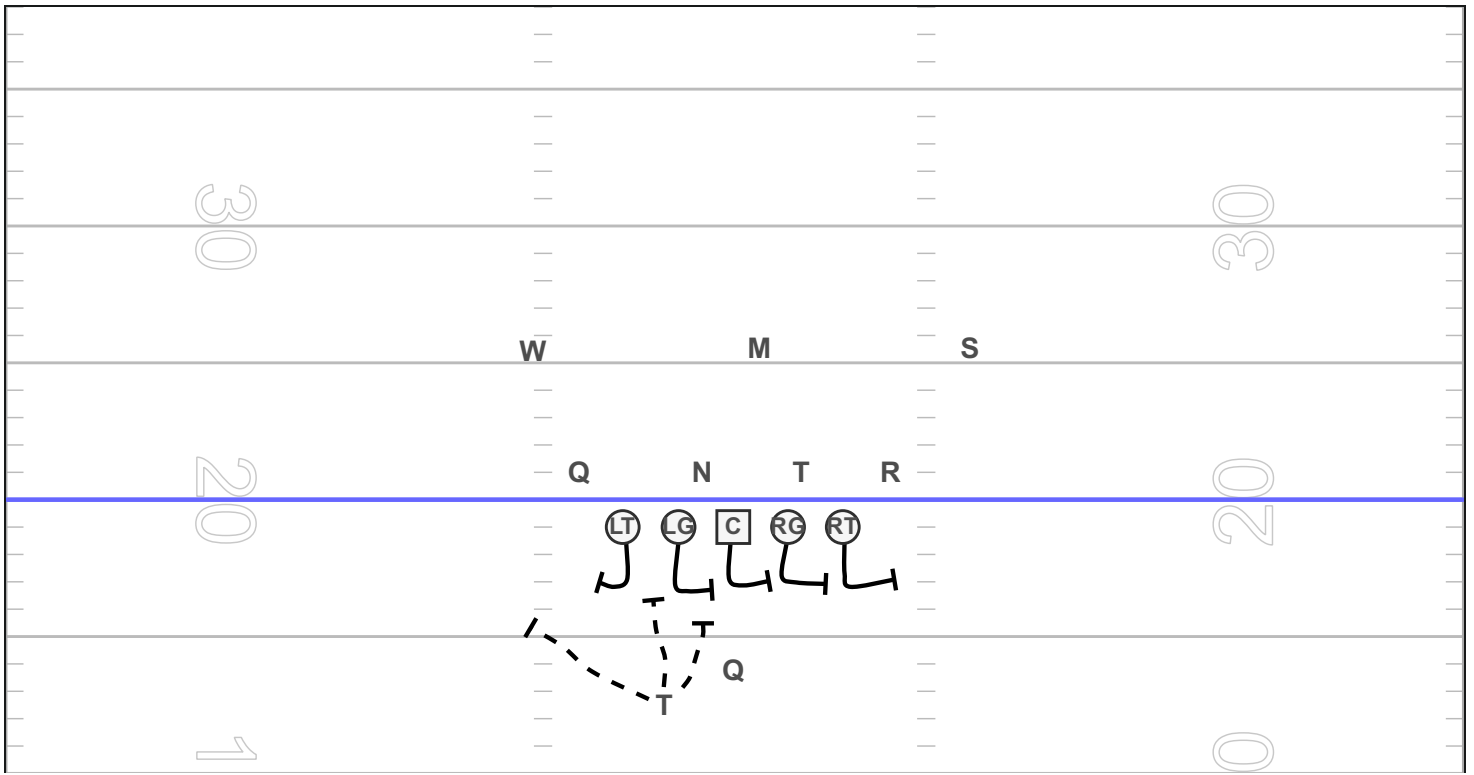


FULL FIELD 4 VANCOUVERT



SUPER HOT LEFT - WING RIGHT VANCOUVERT 70





C Slide a 4 playside

RG Slide a 4 playside

RT Slide a 4 playside

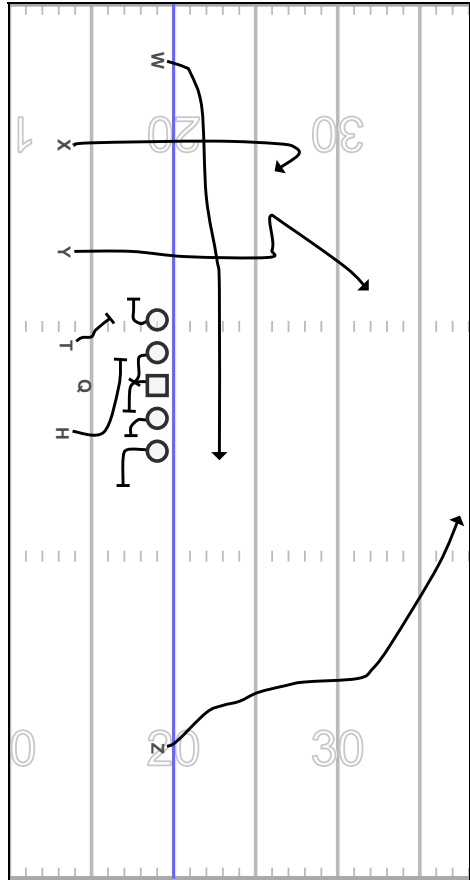
LG Slide a 4 playside

LT backside = solo

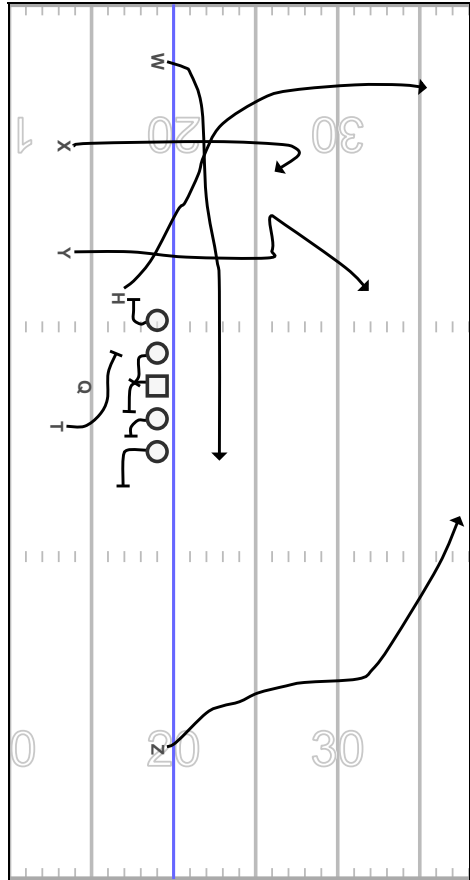
Q Protection a 6

T Toujours a l'opposé du call. A gab to B gap to C gap

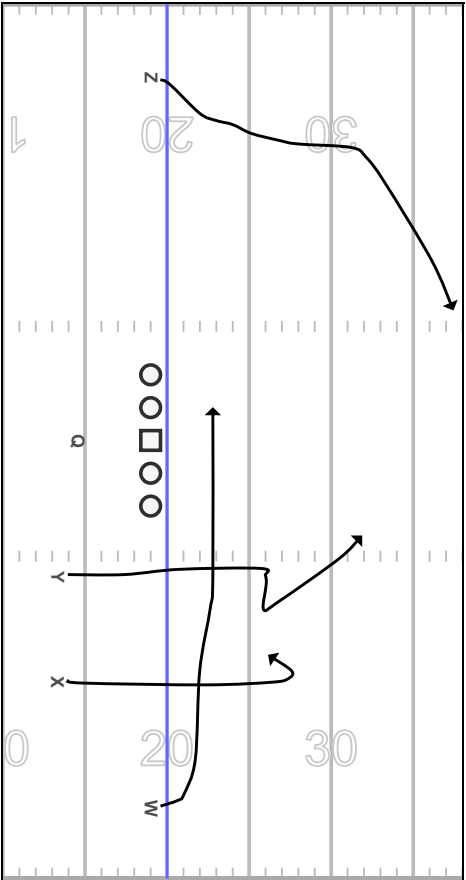
SUPER HOT LEFT - BASE LEFT CALGARY 70



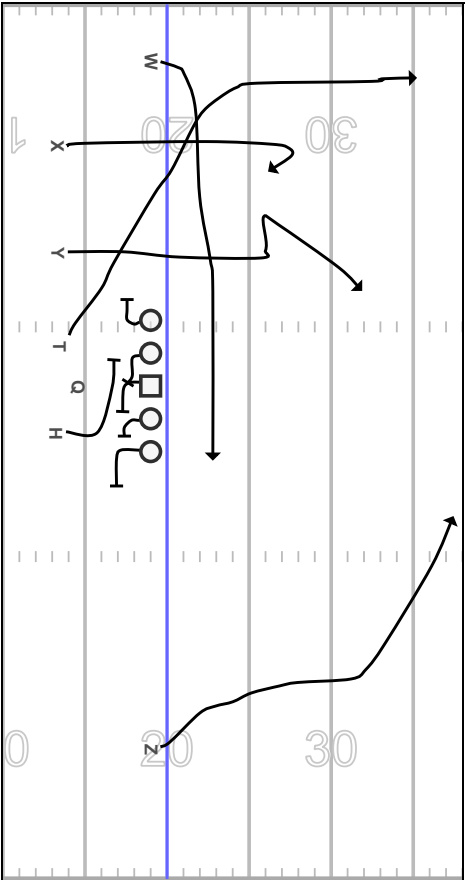
SUPER HOT LEFT - WING LEFT CALGARY - WHEEL

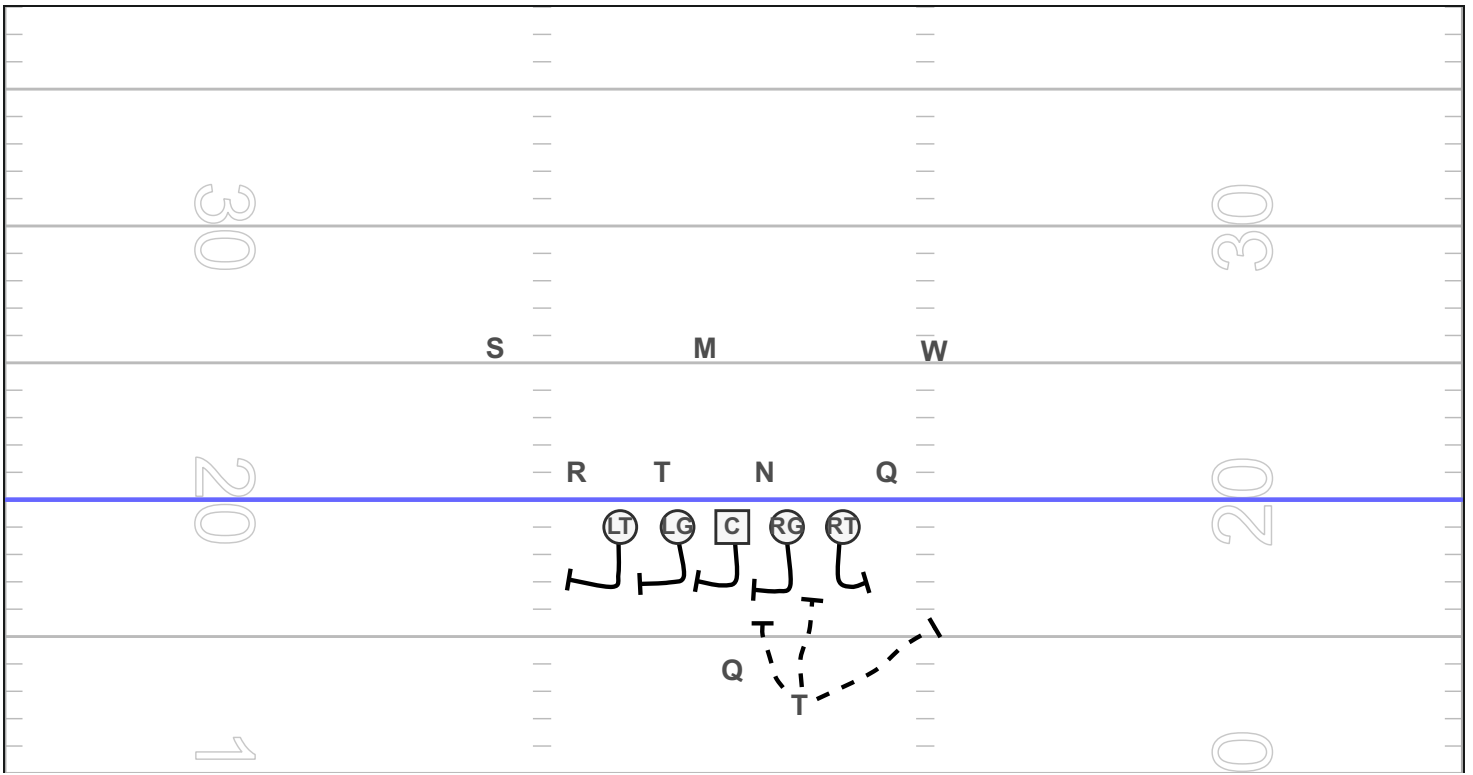


FULL FIELD 5 CALGARY



SUPER HOT LEFT - BASE LEFT CALGARY - WHEEL





C Slide a 4 playside

LG Slide a 4 playside

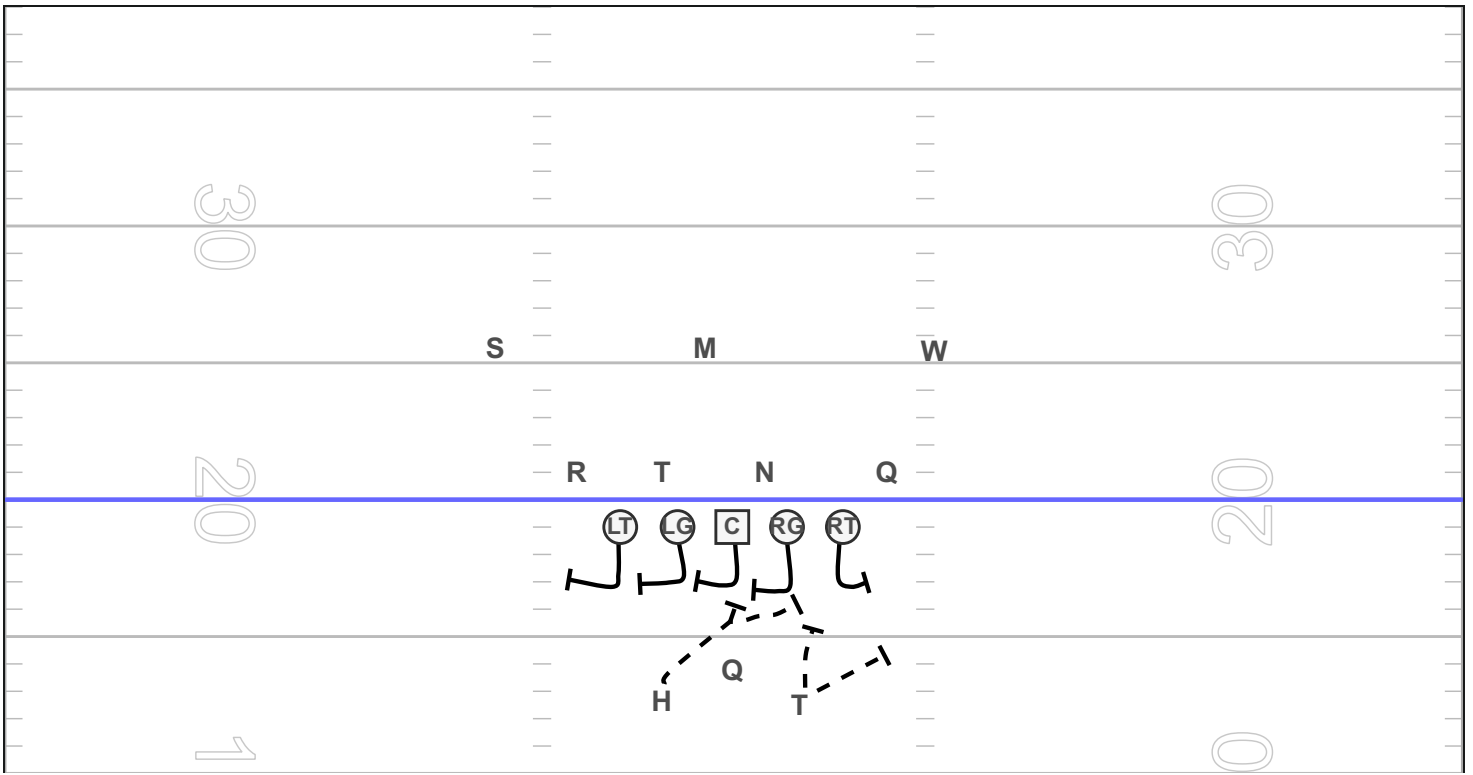
LT Slide a 4 playside

RG Slide a 4 playside

RT backside = solo

Q Protection a 6

T Toujours a l'opposé du call. A gab to B gap to C gap



C Slide a 4 playside

LG Slide a 4 playside

LT Slide a 4 playside

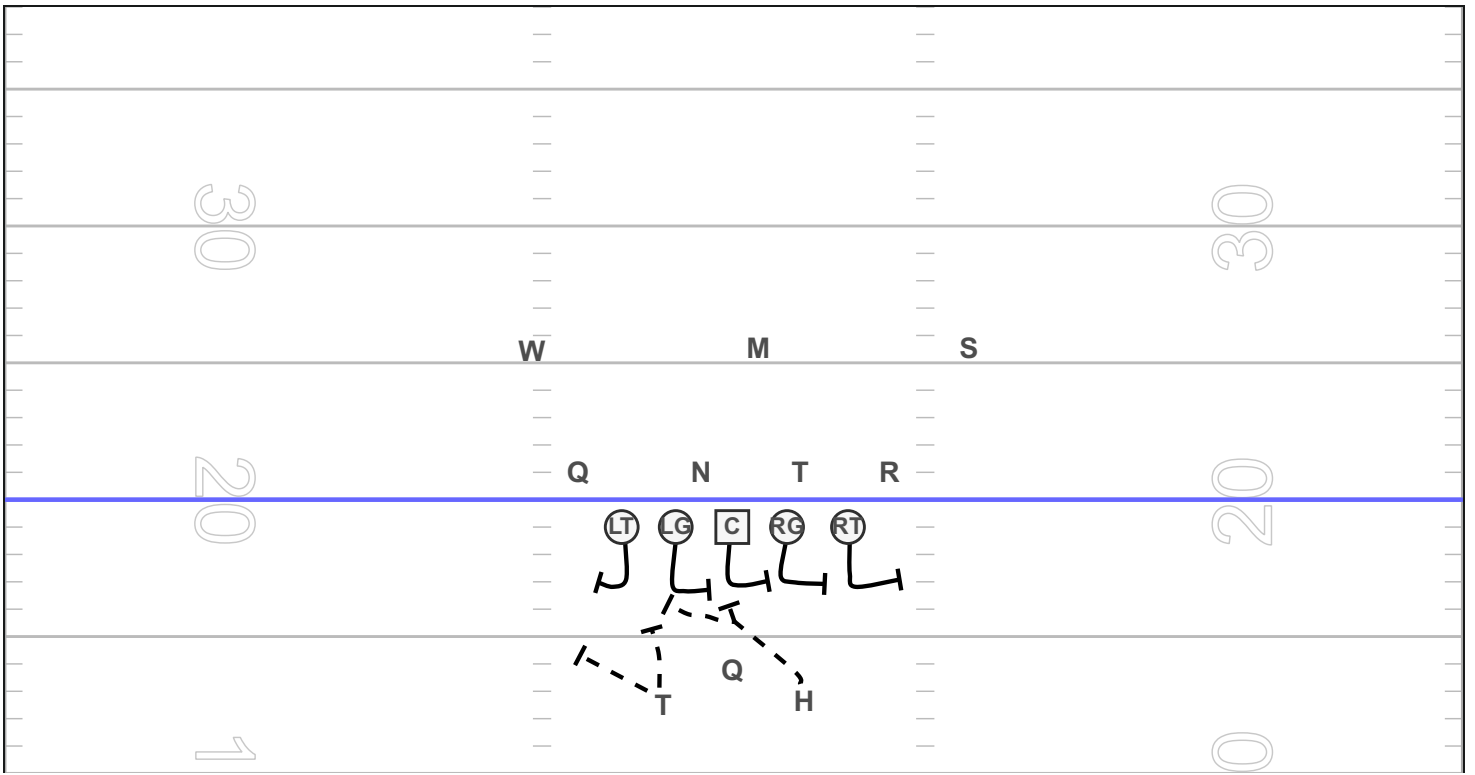
RG Slide a 4 playside

RT backside = solo

Q Protection a 7

T Toujours a l'opposé du call. B gab to C gap

H Toujours a l'opposé du call. A gab to B gap



C Slide a 4 playside

RG Slide a 4 playside

RT Slide a 4 playside

LG Slide a 4 playside

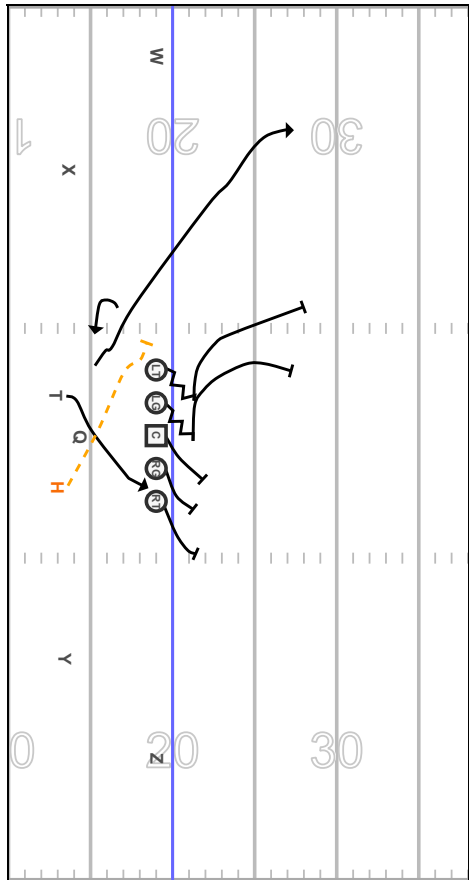
LT backside = solo

Q Protection a 7

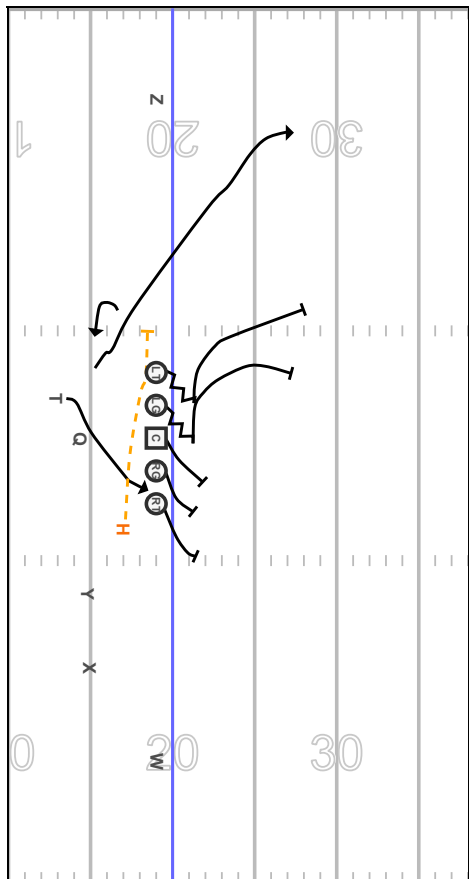
T Toujours a l'opposé du call. B gab to C gap

H Toujours a l'opposé du call. A gab to B gap

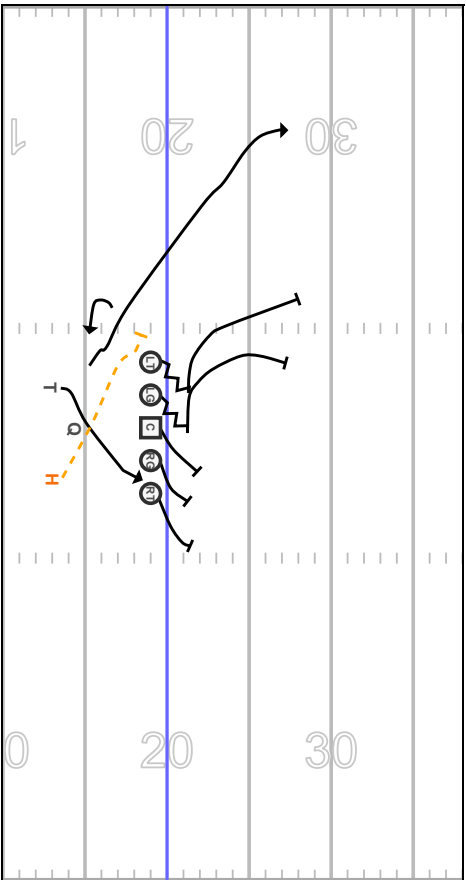
HOT LEFT - BASE LEFT DOG BLAST SONY



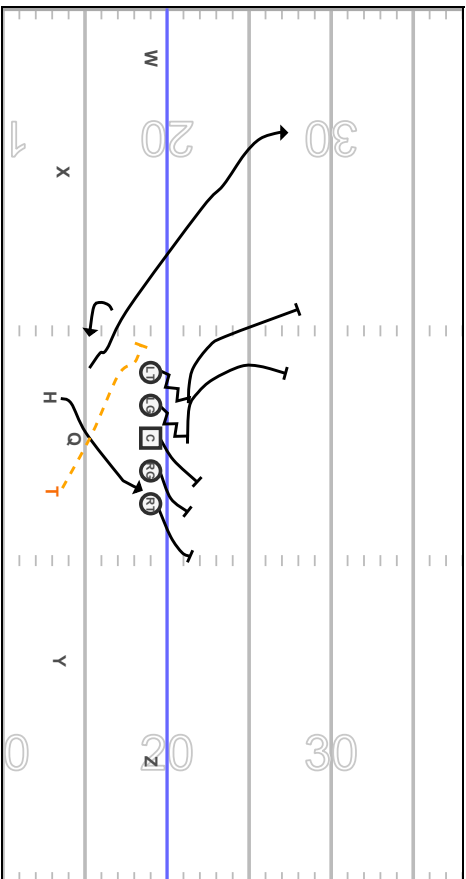
SUPER HOT RIGHT - WING RIGHT DOG BLAST SON



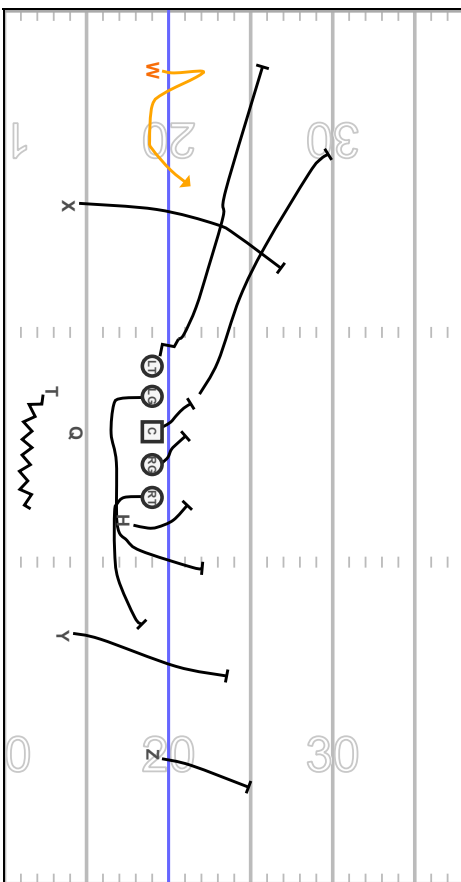
SCREEN 1 DOG BLAST SONY



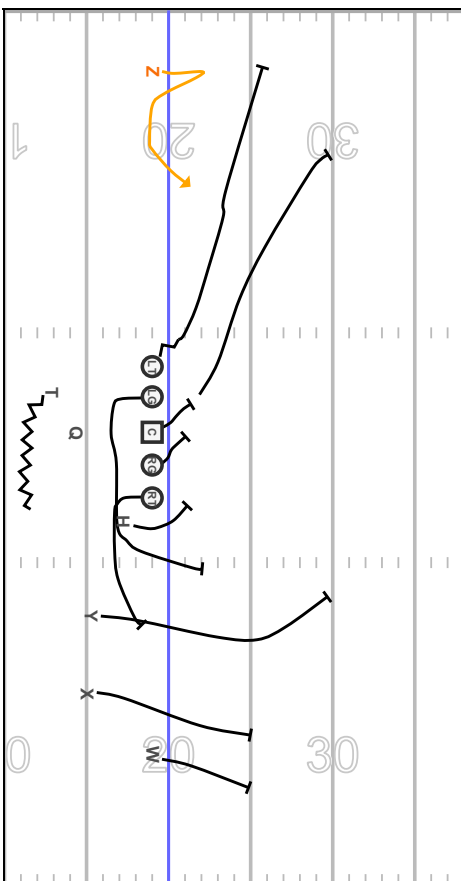
HOT LEFT - BASE RIGHT DOG BLAST SONY



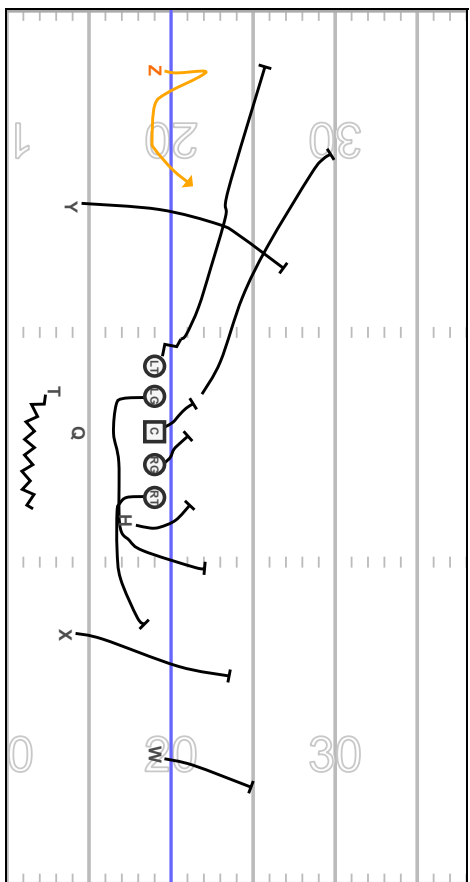
HOT LEFT - WING RIGHT PUMA - SAMSUNG



SUPER HOT RIGHT - WING RIGHT PUMA - SAMSUNG



SCREEN 2 PUMA - SAMSUNG



HOT RIGHT - WING RIGHT PUMA - SAMSUNG

