

CAMP NOTRE-DAME 2026

Campus Notre-Dame de Foy

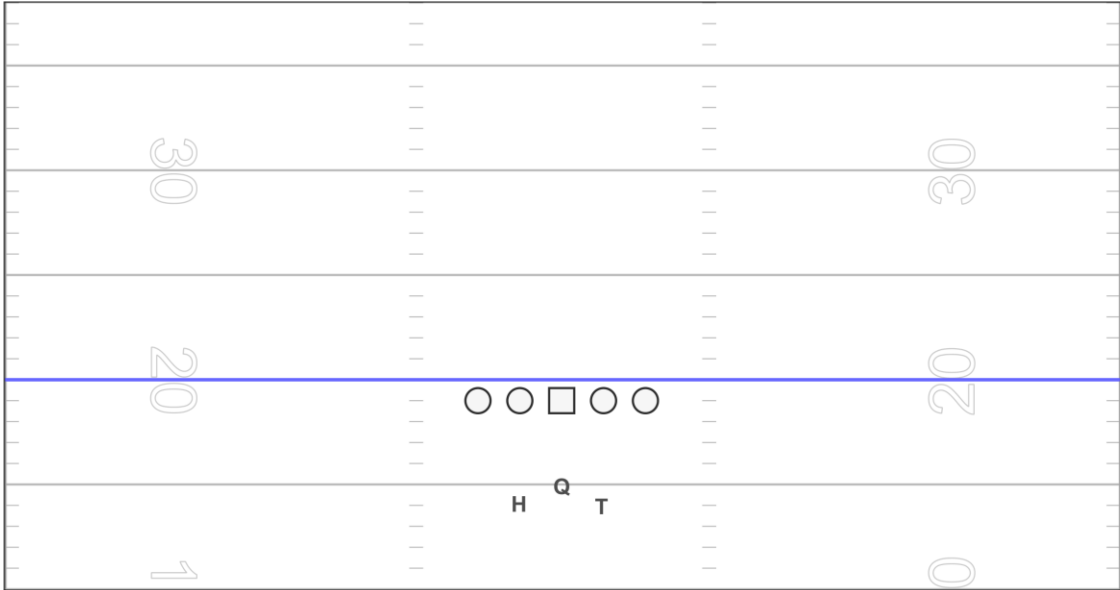
Mens Varsity Football

Offense

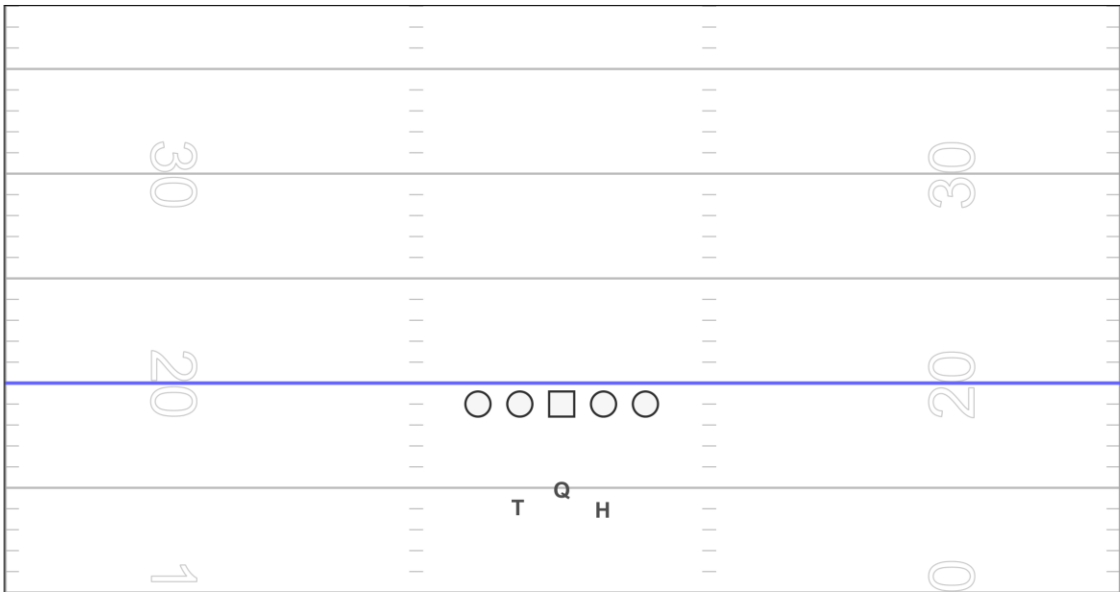


BACKFIELDS SET 1

BASE RIGHT

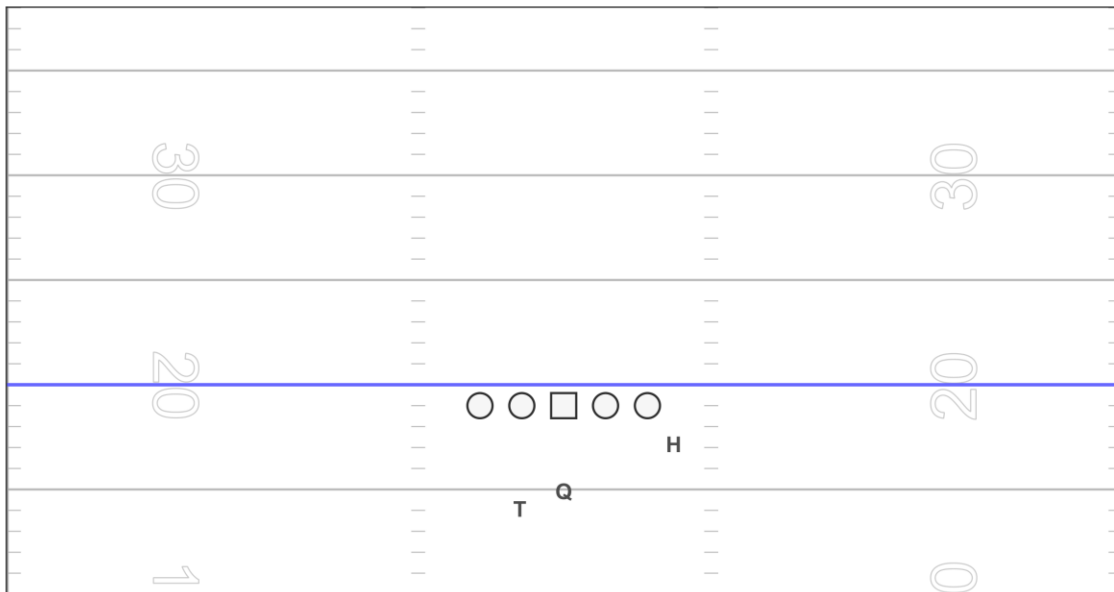


BASE LEFT

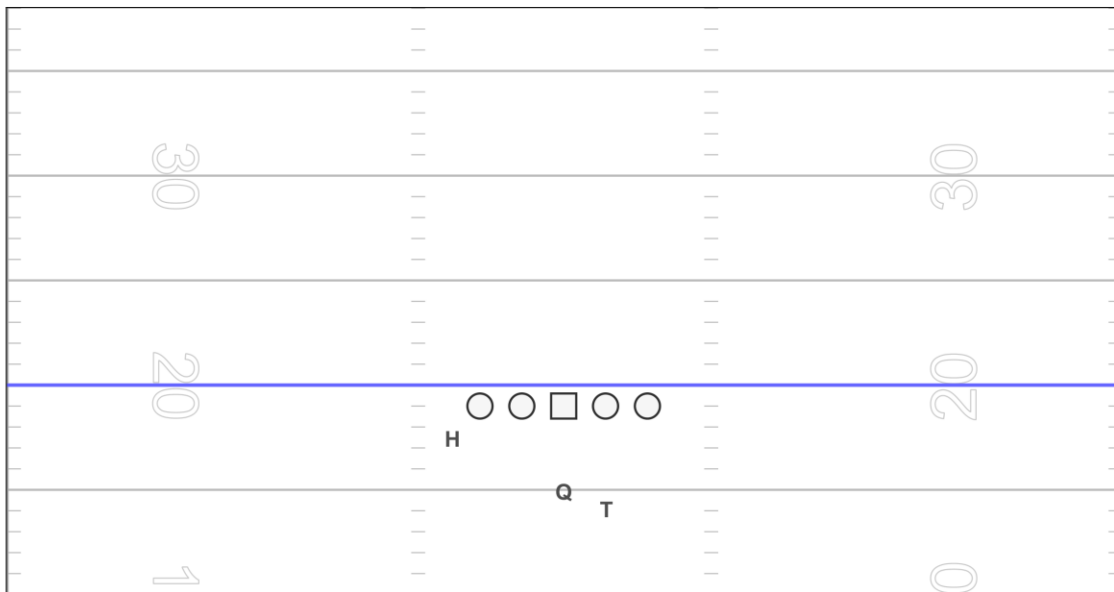


BACKFIELDS SET 2

WING



WING LEFT



FORMATION 1

HOT RIGHT

A handwriting practice grid with four horizontal lines and two vertical dashed lines. A blue line is drawn across the middle. The grid contains the following elements:

- Top line: 30 (left), 30 (right)
- Second line: 20 (left), 20 (right)
- Blue line: z (left), ○ ○ □ ○ ○ (center), w (right)
- Third line: y (left), q (center), x (right)
- Bottom line: 1 (left), 0 (right)

HOT LEFT

A handwriting practice grid with four horizontal lines and two vertical dashed lines. A blue line is drawn across the middle. The grid contains the following elements:

- Top line: 30 (left), 30 (right)
- Second line: 20 (left), 20 (right)
- Blue line: w (left), ○ ○ □ ○ ○ (center), z (right)
- Third line: x (left), q (center), Aa y (right)
- Bottom line: 1 (left), 0 (right)

SUPER HOT RIGHT

A handwriting practice grid with four horizontal lines and two vertical dashed lines. A blue horizontal line is drawn across the middle. The grid contains the following elements:

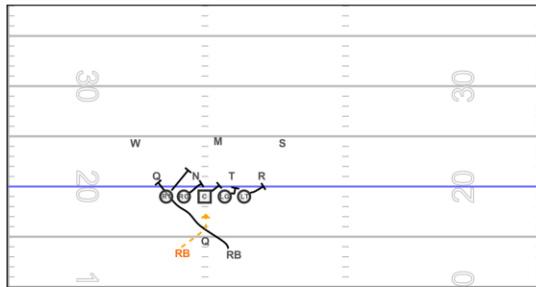
- Large numbers 30 on the left and right sides, positioned between the top and second lines.
- Large numbers 20 on the left and right sides, positioned between the second and third lines.
- Large number 1 on the left side, positioned between the third and bottom lines.
- Large number 0 on the right side, positioned between the third and bottom lines.
- On the blue line, the letters 'z' and 'w' are written on the left and right respectively.
- Between the blue line and the line below it, the letters 'q', 'x', 'Aa', and 'y' are written.
- Five symbols are placed on the blue line: two circles, a square, and two more circles.

SUPER HOT LEFT

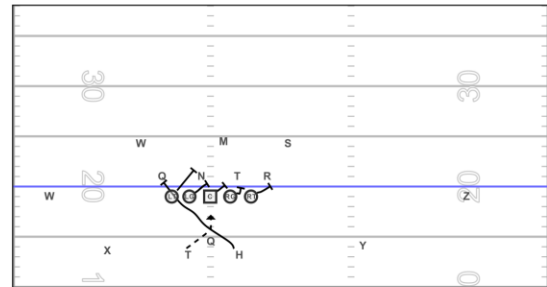
A handwriting practice grid with four horizontal lines and two vertical dashed lines. A blue horizontal line is drawn across the middle. The grid contains the following elements:

- Large numbers 30 on the left and right sides, positioned between the top and second lines.
- Large numbers 20 on the left and right sides, positioned between the second and third lines.
- Large number 1 on the left side, positioned between the third and bottom lines.
- Large number 0 on the right side, positioned between the third and bottom lines.
- On the blue line, the letters 'w' and 'z' are written on the left and right respectively.
- Between the blue line and the line below it, the letters 'y', 'Aa', 'x', and 'q' are written.
- Five symbols are placed on the blue line: two circles, a square, and two more circles.

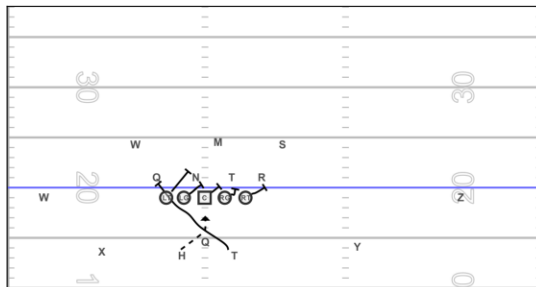
DOG BLAST



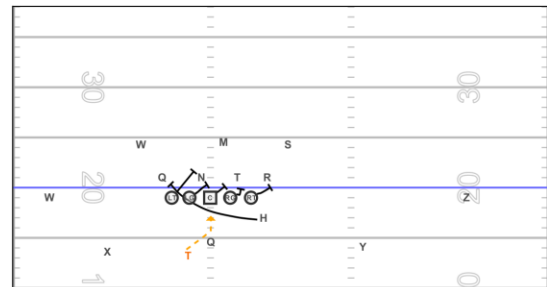
HOT LEFT - BASE LEFT DOG BLAST



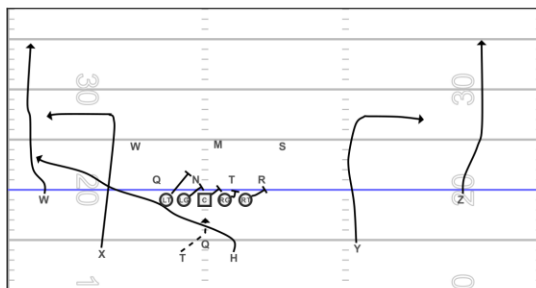
HOT LEFT - BASE RIGHT DOG BLAST



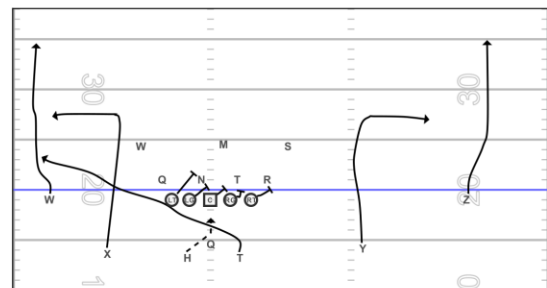
HOT LEFT - WING RIGHT DOG BLAST



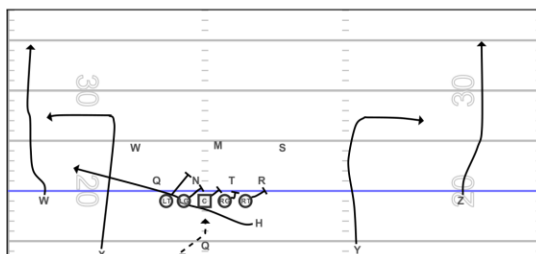
HOT LEFT - BASE LEFT DOG SLICE - FLORIDE



HOT LEFT - BASE RIGHT DOG SLICE - FLORIDE



HOT LEFT - WING RIGHT DOG SLICE - FLORIDE



RUN 2

HOT LEFT - WING RIGHT PUMA

A handwriting practice grid with four horizontal lines. A blue line is drawn on the second line from the top. The letters 'W', 'M', 'T', 'R', 'H', and 'S' are written in black on the blue line. A dashed line shows the stroke order for the letter 'P', starting from the top line, going down to the blue line, then curving up to the top line. A dashed line shows the stroke order for the letter 'U', starting from the blue line, going down to the bottom line, then curving up to the blue line. A dashed line shows the stroke order for the letter 'O', starting from the blue line, going down to the bottom line, then curving up to the blue line. The numbers '20' and '30' are written in the top and bottom margins. The letters 'X' and 'Y' are written in the top and bottom margins.

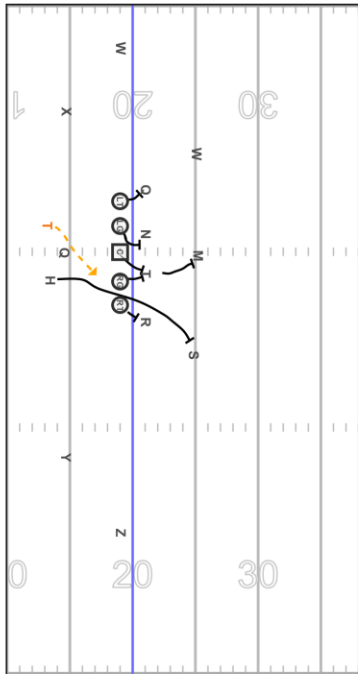
PUMA

A handwriting practice grid with four horizontal lines. A blue line is drawn on the second line from the top. The letters 'W', 'M', 'T', 'R', 'H', and 'S' are written in black on the blue line. A dashed line shows the stroke order for the letter 'P', starting from the top line, going down to the blue line, then curving up to the top line. A dashed line shows the stroke order for the letter 'U', starting from the blue line, going down to the bottom line, then curving up to the blue line. A dashed line shows the stroke order for the letter 'O', starting from the blue line, going down to the bottom line, then curving up to the blue line. The numbers '20' and '30' are written in the top and bottom margins. A right-pointing arrow is in the top margin.

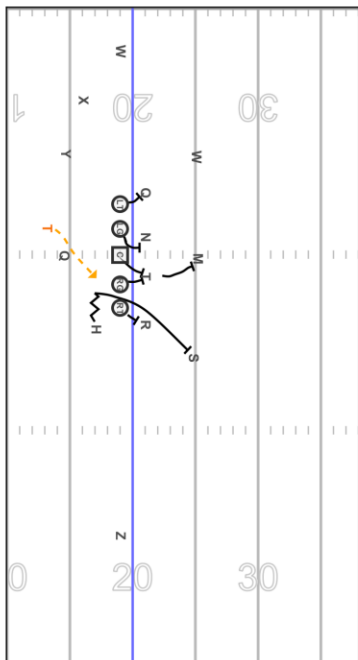
SUPER HOT LEFT - WING RIGHT PUMA

A handwriting practice grid with four horizontal lines. A blue line is drawn on the second line from the top. The letters 'W', 'M', 'T', 'R', 'H', and 'S' are written in black on the blue line. A dashed line shows the stroke order for the letter 'P', starting from the top line, going down to the blue line, then curving up to the top line. A dashed line shows the stroke order for the letter 'U', starting from the blue line, going down to the bottom line, then curving up to the blue line. A dashed line shows the stroke order for the letter 'O', starting from the blue line, going down to the bottom line, then curving up to the blue line. The numbers '20' and '30' are written in the top and bottom margins. The letters 'X' and 'Y' are written in the top and bottom margins. A right-pointing arrow is in the top margin.

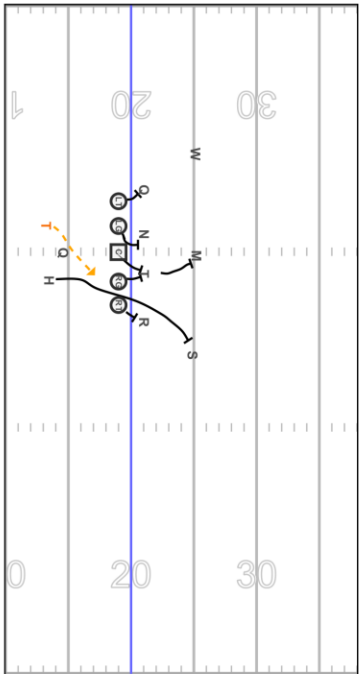
HOT LEFT - BASE LEFT LÉOPARD



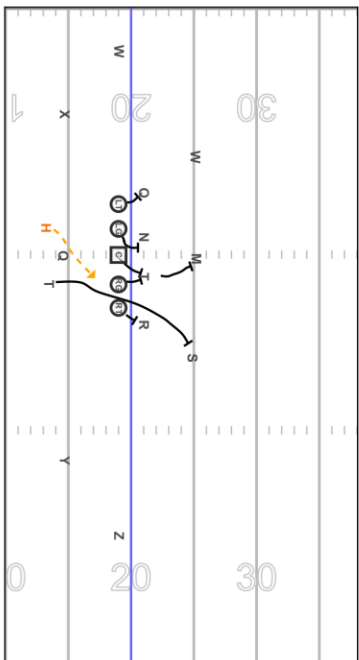
SUPER HOT LEFT - WING RIGHT LÉOPARD



LÉOPARD

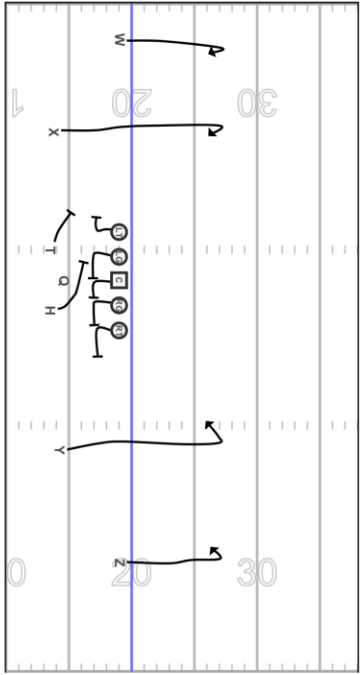


HOT LEFT - BASE RIGHT LÉOPARD

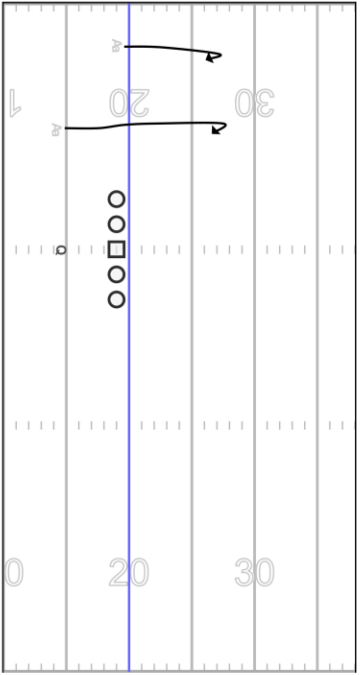


HALF FIELD PASS 1

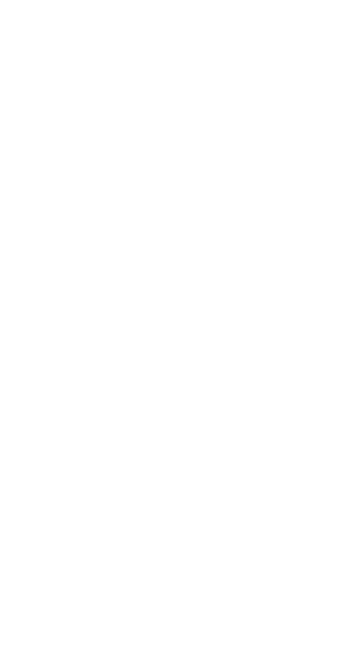
HOT LEFT - BASE LEFT HOUSTON - 70



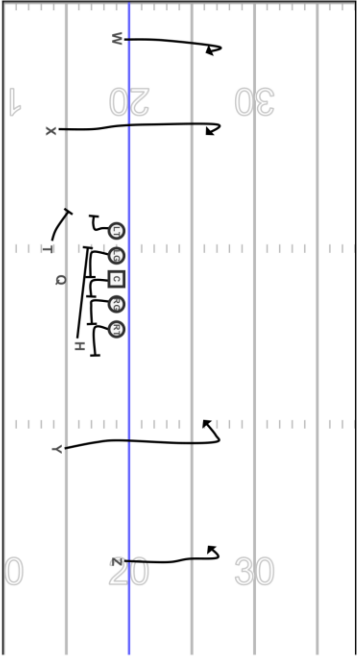
HOUSTON



HOT LEFT - WING RIGHT HOUSTON - 70

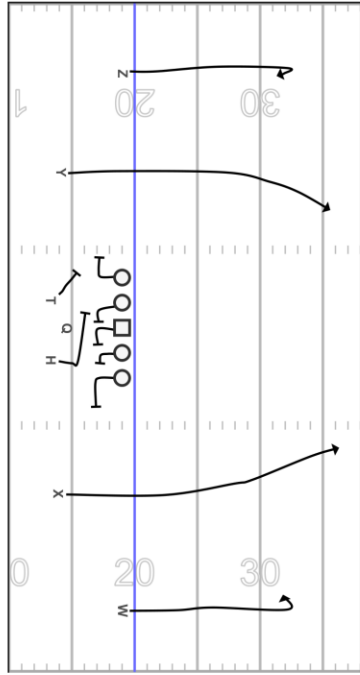


HOUSTON

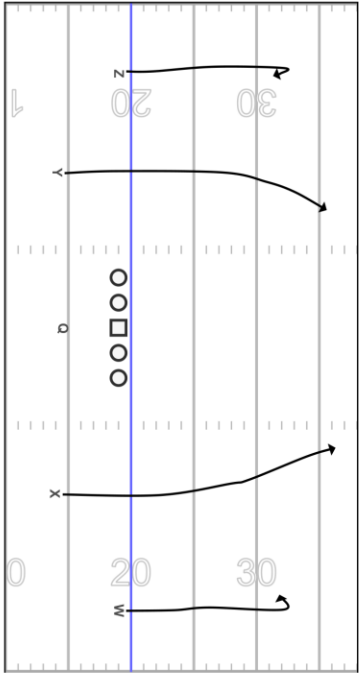


MULTIPLE PLAYS

HOT LEFT - BASE LEFT BOSTON 70



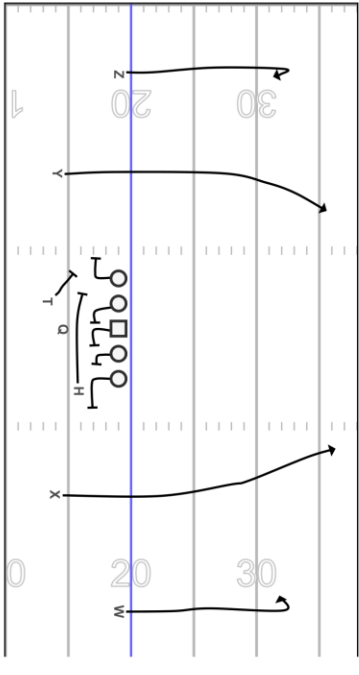
HALF FIELD PASS 3 BOSTON



HOT LEFT - WING RIGHT BOSTON 70

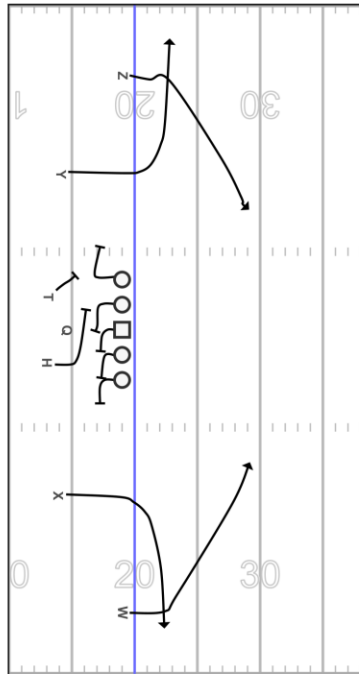


HALF FIELD PASS 3 BOSTON

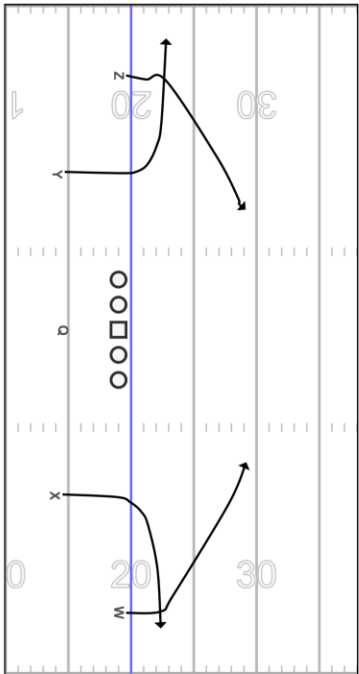


MULTIPLE PLAYS

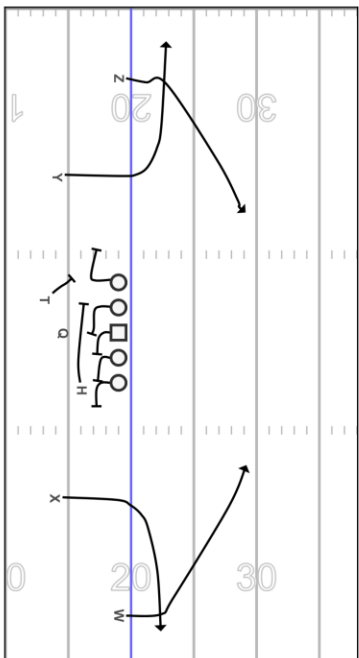
HOT LEFT - BASE LEFT SEATTLE 70



HALF FIELD PASS 4 SEATTLE

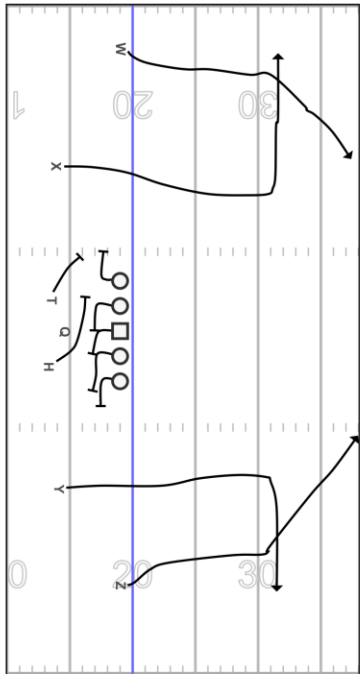


HOT LEFT - WING RIGHT SEATTLE 70

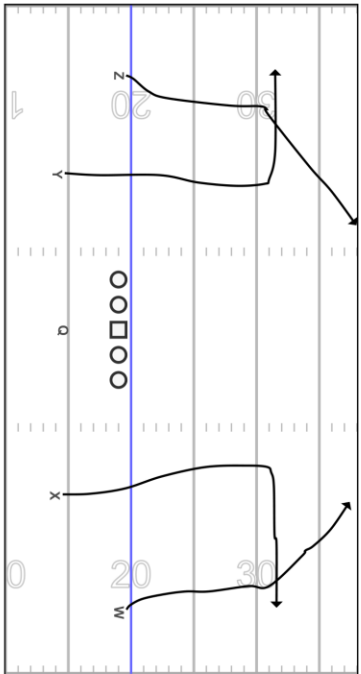


MULTIPLE PLAYS

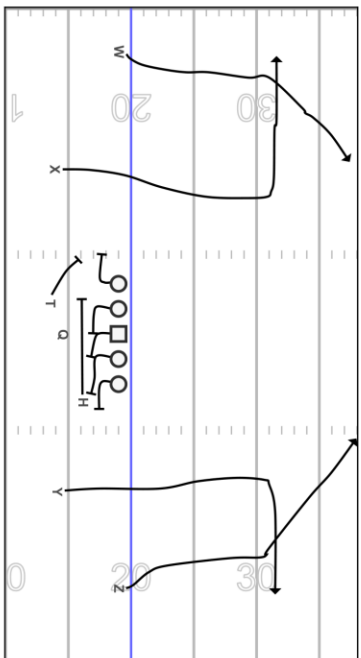
HOT LEFT - BASE LEFT PITTSBURGH 70



HALF FIELD PASS 6 PITTSBURGH

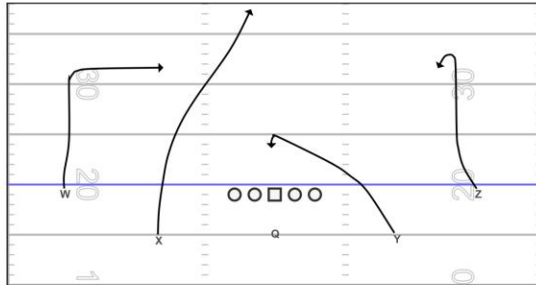


HOT LEFT - WING RIGHT PITTSBURGH 70

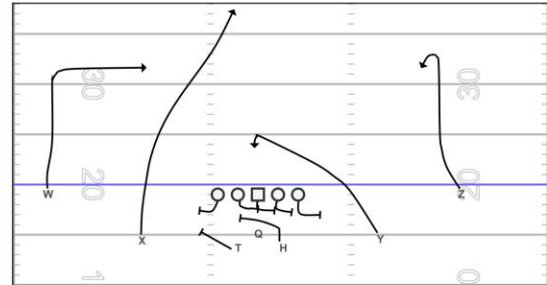


MULTIPLE PLAYS

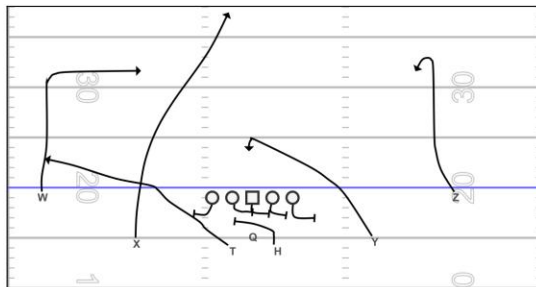
FULL FIELD 1 MONTRÉAL



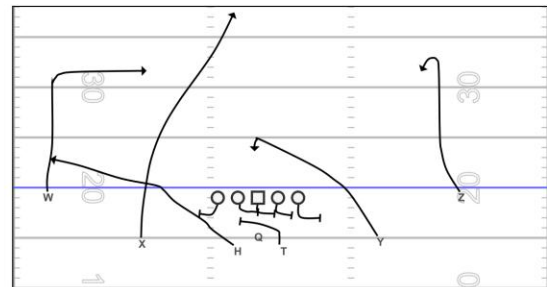
HOT LEFT - BASE LEFT MONTRÉAL 70



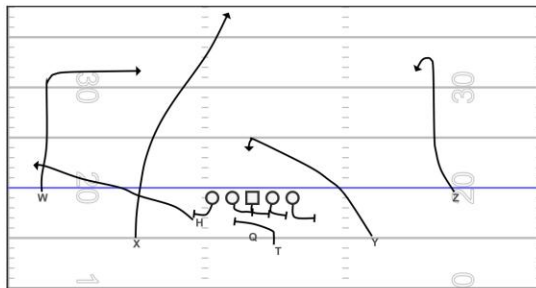
HOT LEFT - BASE LEFT MONTRÉAL - FLAT 60



HOT LEFT - BASE RIGHT MONTRÉAL - FLAT 60

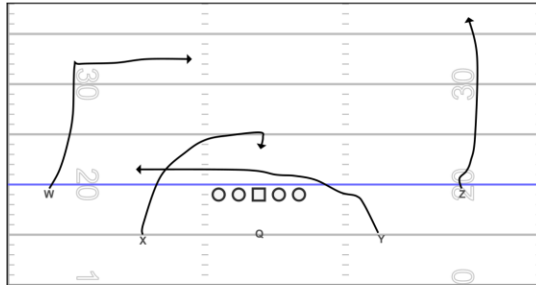


HOT LEFT - WING LEFT MONTRÉAL - FLAT 60

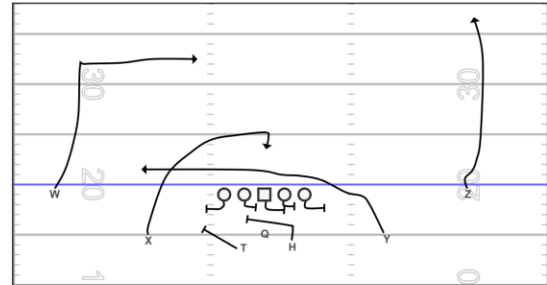


MULTIPLE PLAYS

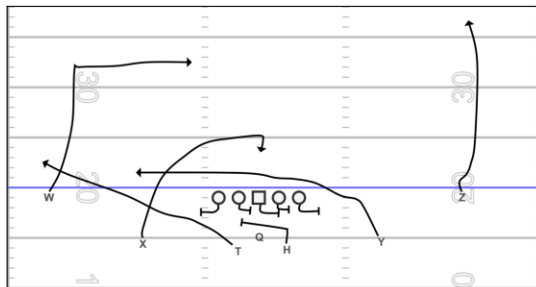
FULL FIELD 3 HAMILTON



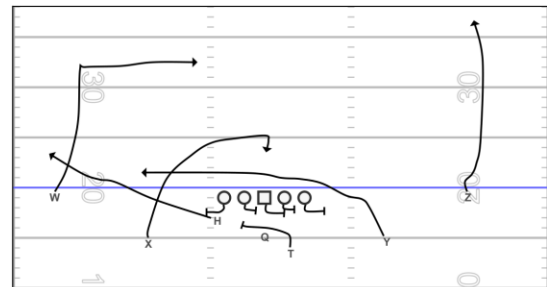
HOT LEFT - BASE LEFT HAMILTON 70



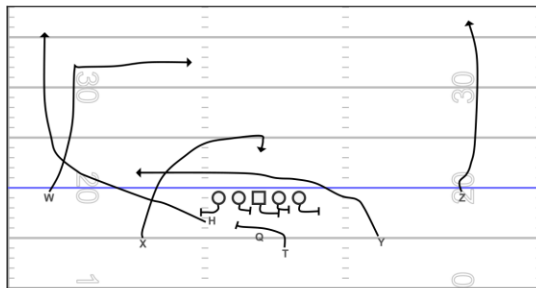
HOT LEFT - BASE LEFT HAMILTON FLAT 60



HOT LEFT - WING LEFT HAMILTON FLAT 60

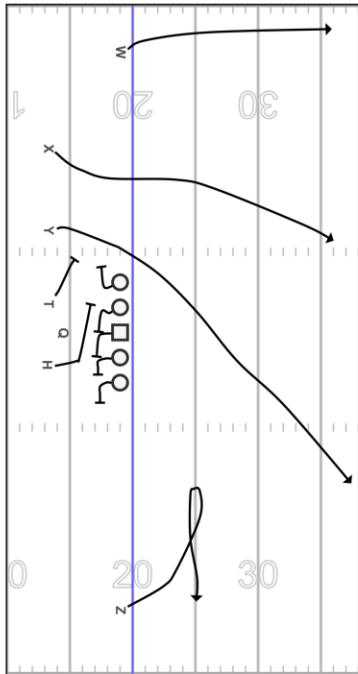


HOT LEFT - WING LEFT HAMILTON FLAT UP 60

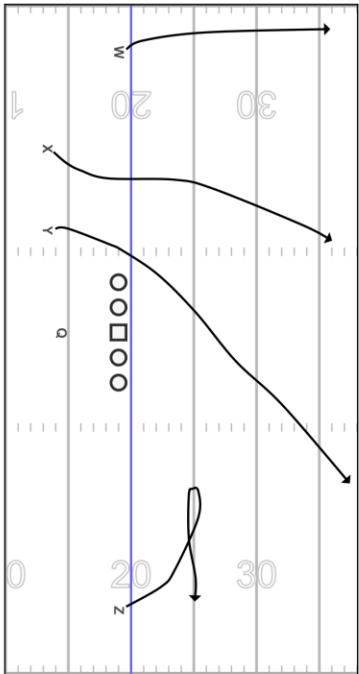


MULTIPLE PLAYS

SUPER HOT LEFT - BASE LEFT VANCOUVERT 70



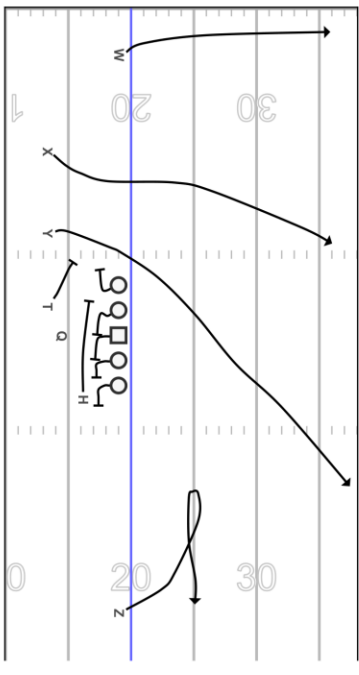
FULL FIELD 4 VANCOUVERT

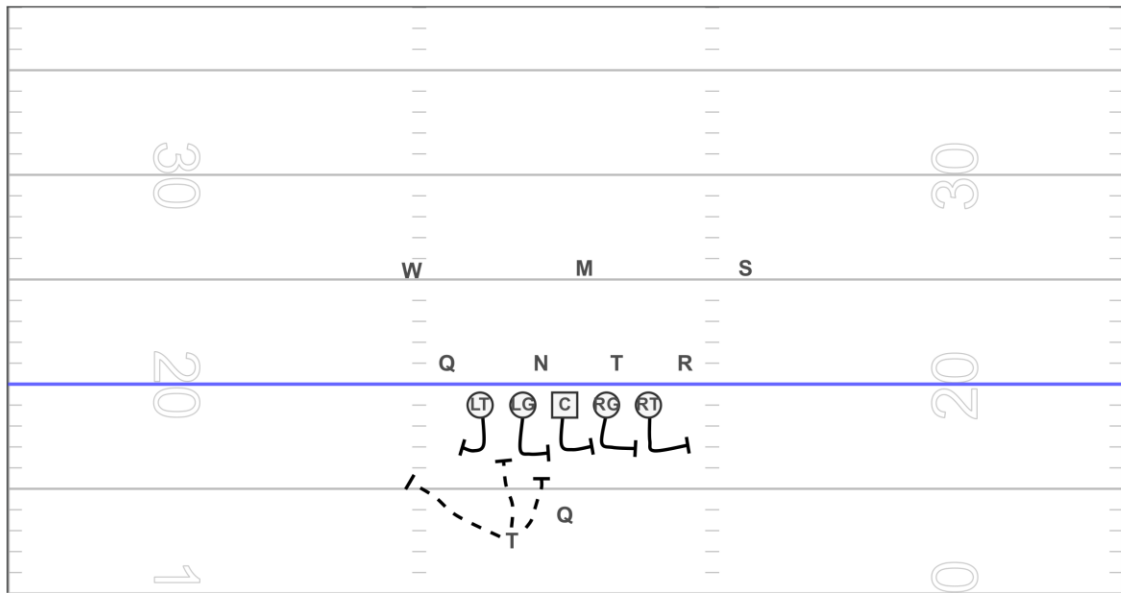


SUPER HOT LEFT - WING RIGHT VANCOUVERT 70

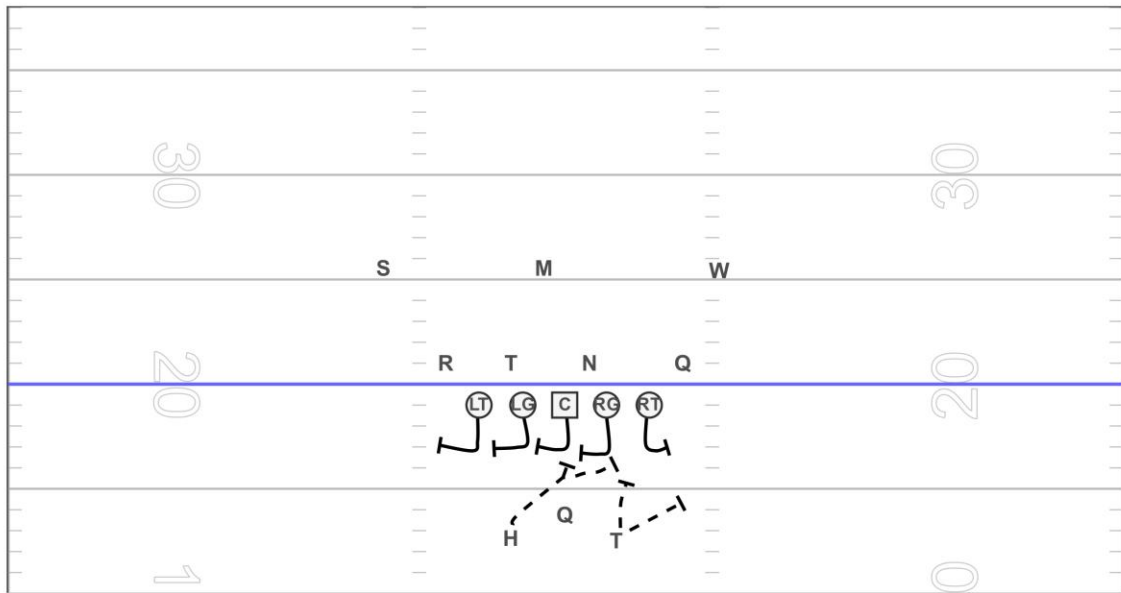


FULL FIELD 4 VANCOUVERT





C	Slide a 4 playside
RG	Slide a 4 playside
RT	Slide a 4 playside
LG	Slide a 4 playside
LT	backside = solo
Q	Protection a 6
T	Toujours a l'opposé du call. A gab to B gap to C gap



C Slide a 4 playside

LG Slide a 4 playside

LT Slide a 4 playside

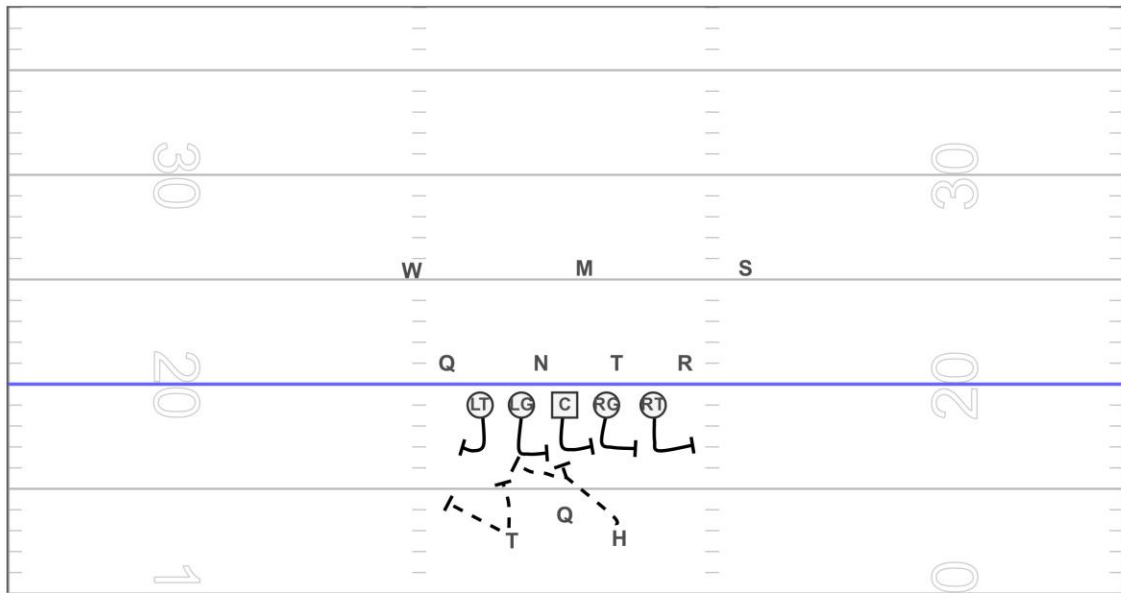
RG Slide a 4 playside

RT backside = solo

Q Protection a 7

T Toujours a l'opposé du call. B gab to C gap

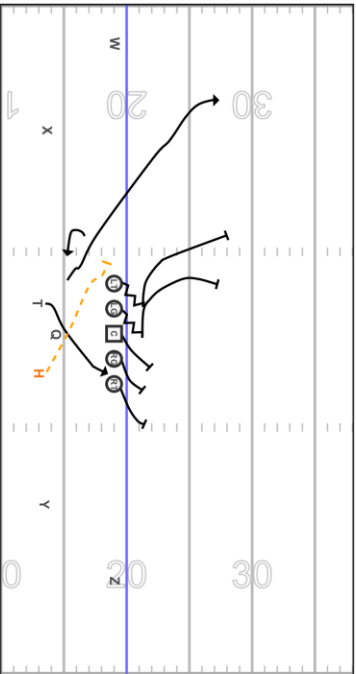
H Toujours a l'opposé du call. A gab to B gap



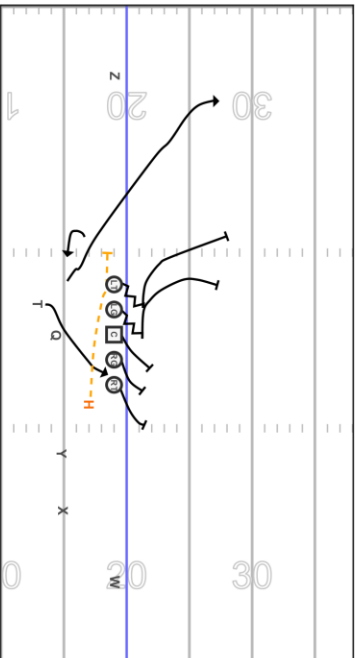
C	Slide a 4 playside
RG	Slide a 4 playside
RT	Slide a 4 playside
LG	Slide a 4 playside
LT	backside = solo
Q	Protection a 7
T	Toujours a l'opposé du call. B gab to C gap
H	Toujours a l'opposé du call. A gab to B gap

MULTIPLE PLAYS

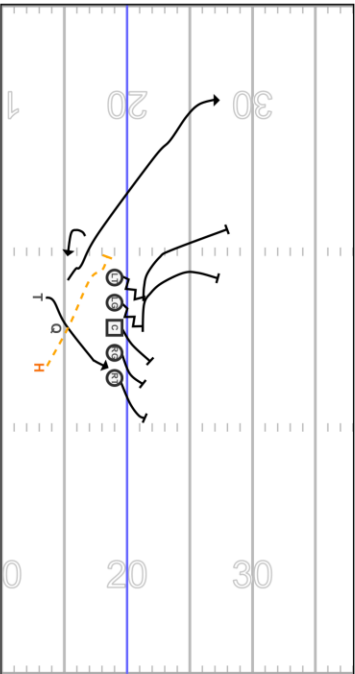
HOT LEFT - BASE LEFT DOG BLAST SONY



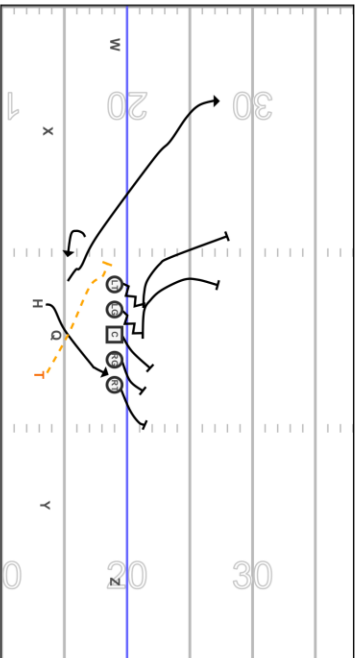
SUPER HOT RIGHT - WING RIGHT DOG BLAST SO



SCREEN 1 DOG BLAST SONY

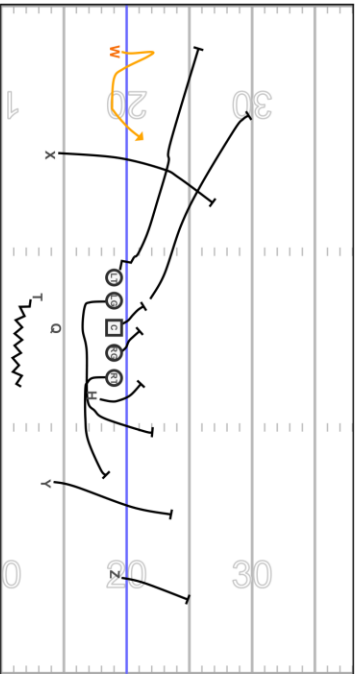


HOT LEFT - BASE RIGHT DOG BLAST SONY

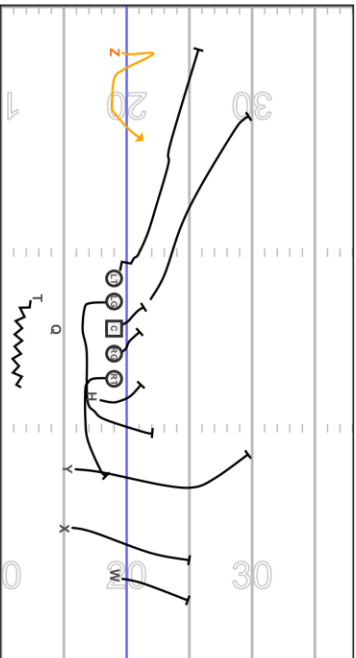


MULTIPLE PLAYS

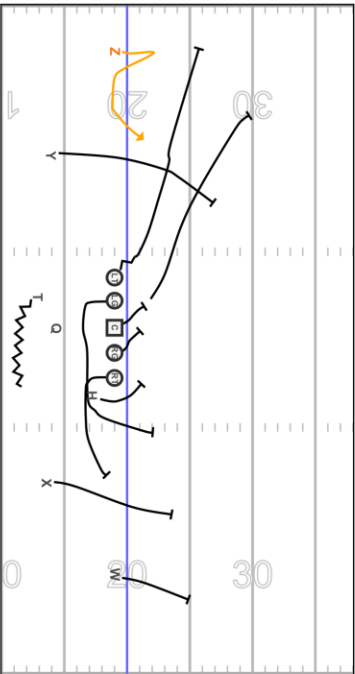
HOT LEFT - WING RIGHT PUMA - SAMSUNG



SUPER HOT RIGHT - WING RIGHT PUMA - SAMSC



SCREEN 2 PUMA - SAMSUNG



HOT RIGHT - WING RIGHT PUMA - SAMSUNG

